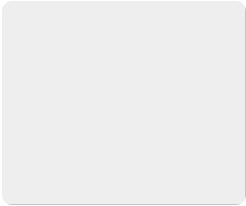




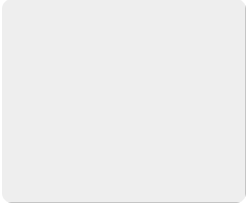
Book (1)
1967,
English



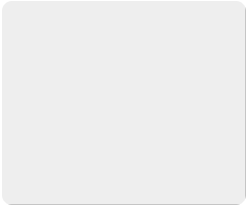
Book (1)
1960,
English



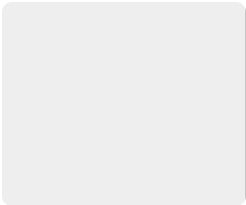
Book (11314245)
1963,



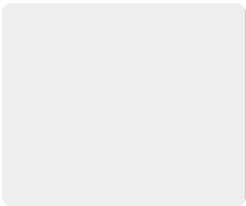
Book (117856)
1968,



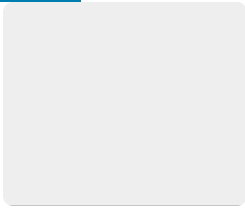
book (14476298)
1965,



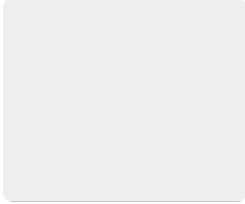
book (16447398)
1968,



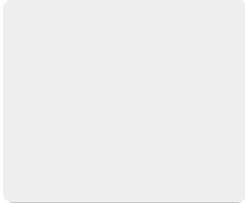
book (180827)
1968,



Book (1967/1-1455)
1962,



Book (1969/1-1284)
1967,



book (1990555)
1966,



Card, Membership (1993.42.18.36)
1961,



Card, Membership (1993.42.18.37)
1962,



Card, Membership (1993.42.18.38)
1963,



Card, Membership (1993.42.18.39)
1964,



Card, Membership (1993.42.18.40)
1965,



Card, Membership (1993.42.18.41)
1966,



Card, Membership (1993.42.18.42)
1967,



Medal (1993.43.12)
1960,



Plaque (1993.43.5)
1968
Eugenia Pilafas Collection



Shoe, Tsarouxia (1993.49.A)
1963, 1963



Shoe, Tsarouxia (1993.49.B)
1963, 1963



Mixer, Ice cream (1994.102.1.A)
March 6, 2013, 1950 – 1960
Margaret's Collection



Mixer, Ice cream (1994.102.1.B)
March 6, 2013, 1950 – 1960
Margaret's Collection



Photograph (1994.103.1)
November 1969,



Certificate, Award (1994.106.1)
November 19, 1969,



Box, Candy (1994.127.3)
1921 - 1997
SUGAR BOWL SWEET SHOP



Photograph (1994.140.1)
1963,



Photograph (1994.140.4)
1962,



Photograph (1994.140.5)
1966,



Photograph (1994.140.7)
1965,



Flatcap (1994.32.1)
1934 - 1989



Certificate, Birth (1994.33.7.a)
March 3, 1969,



Coin (1994.41.16.C)
1962,



Doll (1994.80.A)
1950 – 1970



Doll (1994.80.D)
1950 – 1970



Doll (1994.80.E)
1950 – 1970



Doll (1994.80.I)
1950 – 1970



Doll (1994.80.K)
1950 – 1970



Medal, Commemorative (1995.19.1)
1960,



Letter (1995.19.8.10)
September 28, 1960



Certificate, Commemorative (1995.19.8.8)
September 28, 1960,



Certificate, Membership (1995.19.9.2)
1967,



Plate, Engraving (1996.50.2)
March 6, 2013, 1933 - 1970
Kalpake Family Collection



Plate, Engraving (1996.50.3)
March 6, 2013, 1933 - 1970
Kalpake Family Collection



Stefanothiki (1996.54.2)
October 26, 1969,



Wrapping Paper Roll Cutter (1996.64.12)
1962 - 1996
CUPID CANDIES



Ad, Newspaper (1996.64.15.A)
April 12, 2013, 1936 - 2013
CUPID CANDIES



Hot Fudge Warmer (1996.64.7)
1962 – 1996
CUPID CANDIES



Icon (1996.65.1)
February 25, 2013, 1962
Mary Fotopoulos Collection



Letter (1997.32.1)
1967 – 1988,



Letter (1997.32.10)
1967 – 1988,



Letter (1997.32.11)
1967 – 1988,



Letter (1997.32.12)
1967 – 1988,



Letter (1997.32.13)
1967 – 1988,



Letter (1997.32.14)
1967–1988,



Letter (1997.32.15)
1967–1988,



Letter (1997.32.16)
1967–1988,



Letter (1997.32.17)
1967–1988,



Letter (1997.32.18)
1967–1988,



Letter (1997.32.19)
1967–1988,



Letter (1997.32.2)
1967–1988,



Letter (1997.32.20)
1967–1988,



Letter (1997.32.21)
1967–1988,



Letter (1997.32.22)
1967–1988,



Letter (1997.32.23)
1967–1988,



Letter (1997.32.24)
1967–1988,



Letter (1997.32.25)
1967-1988,



Letter (1997.32.26)
1967-1988,



Letter (1997.32.27)
1967-1988,



Letter (1997.32.28)
1967-1988,



Letter (1997.32.29)
1967-1988,



Letter (1997.32.3)
1967-1988,



Letter (1997.32.30)
1967 – 1988,



Letter (1997.32.31)
1967 – 1988,



Letter (1997.32.32)
1967 – 1988,



Letter (1997.32.33)
1967 – 1988,



Letter (1997.32.34)
1967 – 1988,



Letter (1997.32.35)
1967 – 1988,



Letter (1997.32.36)
1967 - 1988,



Letter (1997.32.37)
1967 - 1988,



Letter (1997.32.4)
1967 - 1988,



Letter (1997.32.5)
1967 - 1988,



Letter (1997.32.6)
1967 - 1988,



Letter (1997.32.7)
1967 - 1988,



Letter (1997.32.8)
1967 - 1988,



Letter (1997.32.9)
1967 – 1988,



Purse (1997.42.2)
February 26, 2013, 1940 – 1960



Sock (1998.18.1.4a)
1960 – 1978
Bill Military Collection



Sock (1998.18.1.4b)
1960 – 1978
Bill Military Collection



Sock (1998.18.1.4c)
1960 – 1978
Bill Military Collection



Sock (1998.18.1.4d)
1960 – 1978
Bill Military Collection



Jacket (1998.19.1.A)
1941 – 1961
Defenders of Democracy



Necktie (1998.19.1.B)
1941 – 1961
Defenders of Democracy



Shirt (1998.19.1.C)
1941 – 1961
Defenders of Democracy



Pants (1998.19.1.D)
1941 – 1961
Defenders of Democracy



Belt (1998.19.1.E)
1941 – 1961
Defenders of Democracy



Photograph (1998.42.13.A)
1961 – 1962
George's Collection



Photograph (1998.42.13.B)
1962
George's Collection



Photograph (1998.42.14)
1943 – 1975
George's Collection



Photograph (1998.53.17)
1964,
Steve N. Pisanos Collection



Photograph (1998.56.21)
October 21, 1963,



Photograph (1998.56.32)
circa 1960,



Picture (1998.56.9)
1962,



Matchbox (1998.7.4)
1967 - 1974



Certificate, Commemorative (1999.11.12)
November 30, 1969,
Arthur Peponis Collection



Program (1999.11.15.A)
1963,
Arthur Peponis Collection



Program (1999.11.15.B)
1963,
Arthur Peponis Collection



Program (1999.11.16)
November 5, 1961,
Arthur Peponis Collection



Program (1999.11.17)
1961,
Arthur Peponis Collection



Program (1999.11.18)
1961,
Arthur Peponis



Hat (1999.9.1)
1950 - 1970



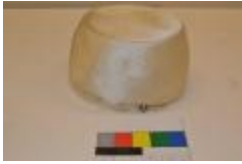
Hatbox (1999.9.10)
1950 - 1970



Hatbox (1999.9.12)
1950 - 1970



Hat (1999.9.2)
1950-1970



Hat (1999.9.3)
1950s, 1950-1979
Helen Stamas Mitchell Hat Collection



Hat (1999.9.4)
1950s, 1950-1970



Hat (1999.9.5)
1950s, 1950-1970



Hat (1999.9.6)
February 28, 2013, 1950 - 1970



Hat (1999.9.7)
1950s, 1950-1970



Hat (1999.9.8)
February 28, 2013, 1950 - 1970



Hat (1999.9.9)
1950-1970



Bracelet (2001.18.7)
1960s,



Photograph (2001.22.2)
1942 – 1960



Rug (2001.33.3.A)
February 25, 2013, 1950 – 1964



Rug (2001.33.3.B)
February 25, 2013, 1950 – 1964



Rug (2001.33.3.C)
February 25, 2013, 1950 – 1964



Projector, Slide (2001.40.3.A)
September 1969,



Projector, Slide (2001.40.3.B)
September 1969,



Dress (2001.44.4)
February 22, 2013, 1950 – 1970
Coula P Collection



Painting (2002.22.1)
April 5, 1967,



Pin (2002.27.1.A)
1968
George's Collection



Pin (2002.27.1.B)
1968
George's Collection



Pin Campaign (2002.27.2.A)
1968
George's Collection



Pin Campaign (2002.27.2.B)
1968
George's Collection



Slide (2002.51.25.1)
1960s,



Slide (2002.51.25.2)
1960s,



Slide (2002.51.25.3)
1960s,



Slide (2002.51.25.4)
1960s,



Slide (2002.51.25.5)
1960s,



Slide (2002.51.25.6)
1960s,



Program (2002.51.34)
November 16, 1967,



Program (2002.51.38)
October 20, 1963,



Booklet (2002.52.24)
1968, 1968



Bag, Tagari (2003.21.1.1)
February 25, 2013, 1940 – 1960



Bag, Tagari (2003.21.1.2)
February 25, 2013, 1940 – 1960



Bag, Tagari (2003.21.1.3)
February 25, 2013, 1940 – 1960



Bag, Tagari (2003.21.1.4)
February 25, 2013, 1940 – 1960



Bag, Tagari (2003.21.1.5)
February 25, 2013, 1940 – 1960



Party Favors (2003.36.9.A)
1962–1970
Daisy's Collection



Party Favors (2003.36.9.B)
1962–1970
Daisy's Collection



Plate, Decorative (2003.37.11)
1900–2003
JANE SARLAS FONTANA



Certificate, Birth (2003.40.7)
October 26, 1962,



Paperweight (2003.57.2)
May 17, 1964,



Cane (2004.9.14)
1960,



Flask, Pocket (2004.9.8.A)
1960,



Flask, Pocket (2004.9.8.B)
1960s,



Doll (2005.26.1.1)
1965,



Doll (2005.26.1.2)
1965,



Ricer (2005.30.10)
February 11, 2013, 1900 – 1960
BARBATSULY



Grater (2005.30.14)
February 11, 2013, 1940 – 1960
BARBATSULY



Cruet (2005.30.8)
February 11, 2013, 1940 – 1960
BARBATSULY



Costume, Dance (2005.5.30)
1960,



Jacket (2005.5.31)
1960s,



Card, Souvenir (2006.15.22)
December 8, 1963,



Postcard (2006.19.53)
1961,



Cleaver (2006.21.2)
February 27, 2013, 1882 – 1969



Photograph (2006.27.7)
1964,



Certificate (2006.27.9)
December 10, 1964,



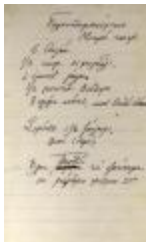
Photograph (2007.17.18)
1950 – 1960



Photograph (2007.26.1)
1965



Photograph (2007.3.37)
1967,
Angelo's Bakery



Recipe (2008.13.1A)
circa 1960,



Recipe (2008.13.1B)
circa 1960,



Photograph (2008.17.10)
1960s,



Photograph (2008.17.20)
1960s



Puppet, Shadow (2008.2.1)
April, 2013, 1965–2001



Puppet, Shadow (2008.2.10)
1965 - 2001



Puppet, Shadow (2008.2.11)
April 11, 2013, 1965 - 2001



Puppet, Shadow (2008.2.12)
April 12, 2013, 1965 - 2001



Puppet, Shadow (2008.2.13)
April 12, 2013, 1965 - 2001



Puppet, Shadow (2008.2.14)
April 12, 2013, 1965 - 2001



Puppet, Shadow (2008.2.15)
April 12, 2013, 1965 - 2001



Puppet, Shadow (2008.2.16)
April 12, 2013, 1965–2001



Puppet, Shadow (2008.2.17)
April 12, 2013, 1965–2001



Puppet, Shadow (2008.2.2)
April 11, 2013, 1965–2001



Puppet, Shadow (2008.2.3)
April 11, 2013, 1965–2001



Puppet, Shadow (2008.2.4)
April 11, 2013, 1965–2001



Puppet, Shadow (2008.2.5)
April 11, 2013, 1965–2001



Puppet, Shadow (2008.2.6)
April 11, 2013, 1965 – 2001



Puppet, Shadow (2008.2.7)
April 11, 2013, 1965 – 2001



Puppet, Shadow (2008.2.8)
April 11, 2013, 1965 – 2001



Puppet, Shadow (2008.2.9)
April 13, 2013, 1965 – 2001



Block, Printing (2008.37.1)
1957 – 2009
Greek Art Printing Company Artifact Collection



Block, Printing (2008.37.12)
1969 – 1974
Greek Art Printing Company Artifact Collection



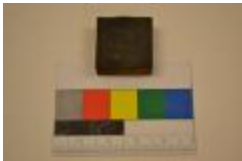
Block, Printing (2008.37.2)
1957 – 2009
Greek Art Printing Company Artifact Collection



Block, Printing (2008.37.21)
1863 – 1973
Greek Art Printing Company Artifact Collection



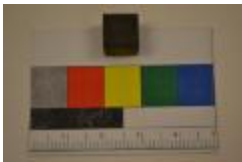
Block, Printing (2008.37.24)
1921 – 1996
Greek Art Printing Company Artifact Collection



Block, Printing (2008.37.25)
1962 – 1969
Greek Art Printing Company Artifact Collection



Block, Printing (2008.37.32)
1967
Greek Art Printing Company Artifact Collection



Block, Printing (2008.37.34)
1967 – 1974
Greek Art Printing Company Artifact Collection



Block, Printing (2008.37.36)
1948 – 1984
Greek Art Printing Company Artifact Collection



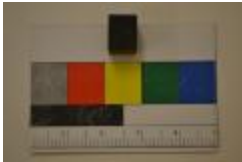
Block, Printing (2008.37.37)
1966 – 1977
Greek Art Printing Company Artifact Collection



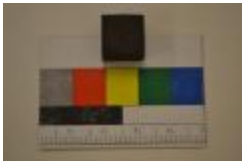
Block, Printing (2008.37.38)
1956 – 1984
Greek Art Printing Company Artifact Collection



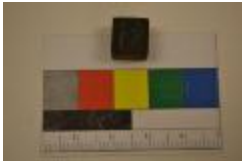
Block, Printing (2008.37.39)
1969 – 1972
Greek Art Printing Company Artifact Collection



Block, Printing (2008.37.44)
1959 – 1968
Greek Art Printing Company Artifact Collection



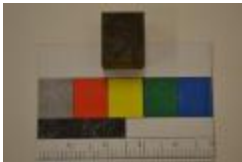
Block, Printing (2008.37.45)
1967 – 1971
Greek Art Printing Company Artifact Collection



Block, Printing (2008.37.46)
1963 – 1969
Greek Art Printing Company Artifact Collection



Block, Printing (2008.37.47)
1954 – 1976
Greek Art Printing Company Artifact Collection



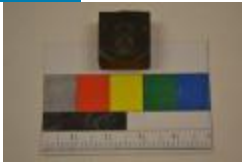
Block, Printing (2008.37.49)
1960 – 1972
Greek Art Printing Company Artifact Collection



Block, Printing (2008.37.53)
20th century
Greek Art Printing Company Artifact Collection



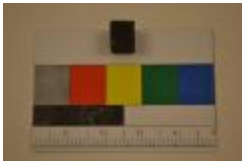
Block, Printing (2008.37.58)
January 14, 1981,
Greek Art Printing Company Artifact Collection



Block, Printing (2008.37.59)
January 14, 1981,
Greek Art Printing Company Artifact Collection



Block, Printing (2008.37.6)
1960 – 1980
Greek Art Printing Company Artifact Collection



Block, Printing (2008.37.60)
1945 – 1979
Greek Art Printing Company Artifact Collection



Block, Printing (2008.37.62)
1959 – 1961
Greek Art Printing Company Artifact Collection



Block, Printing (2008.37.63)
December 1966,
Greek Art Printing Company Artifact Collection



Block, Printing (2008.37.65)
December 1966,
Greek Art Printing Company Artifact Collection



Block, Printing (2008.37.67)
1962 – 1963
Greek Art Printing Company Artifact Collection



Block, Printing (2008.37.68)
1950 – 1964
Greek Art Printing Company Artifact Collection



Block, Printing (2008.37.70)
1969,
Greek Art Printing Company Artifact Collection



Medal, Commemorative (2009.1.1)
1960,
Peter's Collection



Buckle, Belt (2009.1.10)
1960,



Medal, Commemorative (2009.1.2)
1964,
Peter's Collection



Medal, Commemorative (2009.1.4)
1962,
Peter's Collection



Medal, Commemorative (2009.1.5)
1955-1965,
Peter's Collection



Photograph (2009.1.7.1)
1962,



Photograph (2009.1.7.11)
1962,



Photograph (2009.1.7.3)
1962,



Photograph (2009.1.7.7)
1960,



Photograph (2009.1.7.8)
1967,



Medal, Commemorative (2009.1.8)
1960,



Medal, Commemorative (2009.1.9)
1960,



Medal, Political (2009.11.1)
1963,



Photograph (2010.22.1)
August 23, 1965,



Block, Printing (2010.26.1)
1940 - 1967



Block, Printing (2010.26.10)
1952, 1964 - 1967



Block, Printing (2010.26.11)
1940 - 1967



Block, Printing (2010.26.12)
1940 - 1967



Block, Printing (2010.26.13)
1940 - 1967



Block, Printing (2010.26.14)
1904 - 1967



Block, Printing (2010.26.15)
1940–1967



Block, Printing (2010.26.16)
1940–1967



Block, Printing (2010.26.17)
1940–1967



Block, Printing (2010.26.18)
1959, 1940–1967



Block, Printing (2010.26.19)
1940–1967



Block, Printing (2010.26.2)
1940–1967



Block, Printing (2010.26.20)
1940–1967



Block, Printing (2010.26.21)
1940 – 1967



Block, Printing (2010.26.22)
1940 – 1967



Block, Printing (2010.26.23)
1932, 1940 – 1967



Block, Printing (2010.26.24)
1940 – 1967



Block, Printing (2010.26.25)
1940 – 1967



Block, Printing (2010.26.26)
1940 – 1967



Block, Printing (2010.26.27)
1940 – 1967



Block, Printing (2010.26.28)
1940 – 1967



Block, Printing (2010.26.29)
1940 - 1967



Block, Printing (2010.26.3)
1940 - 1967



Block, Printing (2010.26.30)
1940 - 1967



Block, Printing (2010.26.31)
1940 - 1967



Block, Printing (2010.26.32)
1940 - 1967



Block, Printing (2010.26.33)
1940 - 1967



Block, Printing (2010.26.34)
1940 - 1967



Block, Printing (2010.26.35)
1940 - 1967



Block Printing (2010.26.36)
1940 - 1967



Block Printing (2010.26.37)
1940 - 1967



Block Printing (2010.26.38)
1940 - 1967



Block Printing (2010.26.4)
1940 - 1967



Block Printing (2010.26.5)
1940 - 1967



Block Printing (2010.26.6)
1940 - 1967



Block Printing (2010.26.7)
1940 - 1967



Block, Printing (2010.26.8)
1904 – 1967



Block, Printing (2010.26.9)
1904 – 1967



Pin (2010.30.1)
1965 – 1982
Suzanne's Collection



Necklace (2010.30.10)
1965 – 1982
Suzanne's Collection



Belt (2010.30.11)
1965 – 1982
Suzanne's Collection



Belt (2010.30.12)
1965 – 1982
Suzanne's Collection



Skullcap (2010.30.13)
1965 – 1982
Suzanne's Collection



Purse (2010.30.16)
1960s,



Purse (2010.30.17)
1960s,



Apron (2010.30.18)
1960s,



Jacket (2010.30.19)
1960s,



Pin (2010.30.2.A)
1969 – 1982
Suzanne's Collection



Pin (2010.30.2.B)
1969 – 1982
Suzanne's Collection



Pin (2010.30.20)
1969 – 1982
Suzanne's Collection



Sleeve (2010.30.21.A)
1960s,



Sleeve (2010.30.21.B)
1960s,



Cloth Fragment (2010.30.23)
1960s,



Slipper (2010.30.24.A)
1960s,



Slipper (2010.30.24.B)
1960s,



Legging (2010.30.25.A)
1960s,



Legging (2010.30.25.B)
1960s,



Blanket (2010.30.26)
1960s,



Necklace (2010.30.28)
1965 – 1982
Suzanne's Collection



Buckle (2010.30.3)
1965 – 1982
Suzanne's Collection



Pin (2010.30.4)
1965 – 1982
Suzanne's Collection



Pin (2010.30.5)
1965 – 1982
Suzanne's Collection



Pin (2010.30.6)
1965 – 1982
Suzanne's Collection



Pin (2010.30.7)
1965 – 1982
Suzanne's Collection



Pin (2010.30.8)
1965 – 1982
Suzanne's Collection



Pin (2010.30.9)
1965 – 1982
Suzanne's Collection



Certificate (2011.6.16)
1968,



Plaque (2011.6.18)
1968,



Dress (2011.6.19)
1965,



Box (2012.12.1)
February 27, 2012, 1904 – 1967
Ting-a-Ling Candies



Rubber Stamp (2012.12.10)
February 27, 2012, 1904 – 1967



Rubber Stamp (2012.12.11)
February 27, 2012, 1904 – 1967



Block, Printing (2012.12.12)
February 27, 2012, 1904 – 1967



Rubber Stamp (2012.12.2)
February 27, 2012, 1904 – 1967



Rubber Stamp (2012.12.3)
February 27, 2012, 1904 – 1967



Rubber Stamp (2012.12.4)
February 27, 2012, 1904 – 1967



Rubber Stamp (2012.12.5)
February 27, 2012, 1904 – 1967



Rubber Stamp (2012.12.6)
February 27, 2012, 1904 – 1967



Rubber Stamp (2012.12.7)
February 27, 2012, 1904 – 1967



Rubber Stamp (2012.12.8)
February 27, 2012, 1904 – 1967



Rubber Stamp (2012.12.9)
February 27, 2012, 1904 – 1967



Thimble (2012.13.1)
1904 – 1967



Thimble (2012.13.2)
1904 – 1967



Thimble (2012.13.3)
1904 – 1967



Paper, Photographic (2012.14.9)
July 10, 1960,



Painting (2012.18.1)
December 9, 1966,



Painting (2012.18.2)
circa 1966,



Photograph (2012.24.1)
October 1967,



Undershirt (2012.24.10)
1967,



Skirt, Foustanela (2012.24.11)
1967,



Garter (2012.24.12)
1967,



Belt (2012.24.13)
1967,



Skirt (2012.24.2)
circa 1967,



Fez (2012.24.3)
1967,



Fez (2012.24.4)
1967,



Stocking (2012.24.5)
1967,



Stocking (2012.24.6)
1967,



Vest (2012.24.7)
1967,



Vest (2012.24.8)
1967,



Undershirt (2012.24.9)
1967,



Photograph (2012.40.14)
1963,



Photograph (2012.40.7)
1968,



Photograph (2012.40.8)
1968,



Photograph (2012.40.9)
1968,



Photograph (2012.51.1)
1969,



Photograph (2012.51.10)
1966,



Photograph (2012.51.11)
1964,



Photograph (2012.51.14)
1969,



Photograph (2012.51.16)
1969,



Photograph (2012.51.18)
1969,



Photograph (2012.51.2)
1969,



Photograph (2012.51.3)
1969,



Photograph (2012.51.4)
1969,



Photograph (2012.51.5)
1969,



Frame, Picture (2012.8.1)
February 27, 2012, 1964 – 1967



Doily (2013.1.100)
January 25, 2013, 1930 – 1960
Celia's Textile Collection



Handkerchief (2013.1.101)
January 25, 2013, 1930 – 1960
Celia's Textile Collection



Handkerchief (2013.1.102)
January 25, 2013, 1930 – 1960
Celia's Textile Collection



Handkerchief (2013.1.103)
January 25, 2013, 1930 – 1960
Celia's Textile Collection



Doily (2013.1.104)
January 25, 2013, 1930 – 1960
Celia's Textile Collection



Doily (2013.1.105)
January 25, 2013, 1930 – 1960
Celia's Textile Collection



Doily (2013.1.106)
January 25, 2013, 1930 – 1960
Celia's Textile Collection



Doily (2013.1.107)
January 25, 2013, 1930 – 1960
Celia's Textile Collection



Doily (2013.1.108)
January 25, 2013, 1930 – 1960
Celia's Textile Collection



Doily (2013.1.109)
January 25, 2013, 1930 – 1960
Celia's Textile Collection



Doily (2013.1.110)
January 25, 2013, 1930 – 1960
Celia's Textile Collection



Doily (2013.1.111)
January 25, 2013, 1930 – 1960
Celia's Textile Collection



Doily (2013.1.112)
January 25, 2013, 1930 – 1960
Celia's Textile Collection



Doily (2013.1.113)
January 25, 2013, 1930 – 1960
Celia's Textile Collection



Doily (2013.1.114)
January 25, 2013, 1930 – 1960
Celia's Textile Collection



Doily (2013.1.115)
January 25, 2013, 1930 – 1960
Celia's Textile Collection



Doily (2013.1.116)
January 25, 2013, 1930 – 1960
Celia's Textile Collection



Doily (2013.1.117)
January 25, 2013, 1930 – 1960
Celia's Textile Collection



Doily (2013.1.118)
January 25, 2013, 1930 – 1960
Celia's Textile Collection



Doily (2013.1.119)
January 25, 2013, 1930 – 1960
Celia's Textile Collection



Doily (2013.1.120)
January 25, 2013, 1930 – 1960
Celia's Textile Collection



Doily (2013.1.121)
January 25, 2013, 1930 – 1960
Celia's Textile Collection



Doily (2013.1.122)
January 25, 2013, 1930 – 1960
Celia's Textile Collection



Doily (2013.1.123)
January 25, 2013, 1930 – 1960
Celia's Textile Collection



Doily (2013.1.124)
January 25, 2013, 1930 – 1960
Celia's Textile Collection



Doily (2013.1.125)
January 25, 2013, 1930 – 1960
Celia's Textile Collection



Doily (2013.1.126)
January 25, 2013, 1930 – 1960
Celia's Textile Collection



Doily (2013.1.127)
January 25, 2013, 1930 – 1960
Celia's Textile Collection



Doily (2013.1.128)
January 25, 2013, 1930 – 1960
Celia's Textile Collection



Doily (2013.1.129)
January 25, 2013, 1930 – 1960
Celia's Textile Collection



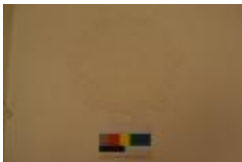
Doily (2013.1.130)
January 25, 2013, 1930 – 1960
Celia's Textile Collection



Doily (2013.1.131)
January 25, 2013, 1930 – 1960
Celia's Textile Collection



Doily (2013.1.132)
January 25, 2013, 1930 – 1960
Celia's Textile Collection



Doily (2013.1.133)
January 25, 2013, 1930 – 1960
Celia's Textile Collection



Doily (2013.1.134)
January 25, 2013, 1930 – 1960
Celia's Textile Collection



Doily (2013.1.135)
January 25, 2013, 1930 – 1960
Celia's Textile Collection



Doily (2013.1.136)
January 25, 2013, 1930 – 1960
Celia's Textile Collection



Doily (2013.1.137)
January 25, 2013, 1930 – 1960
Celia's Textile Collection



Doily (2013.1.138)
January 25, 2013, 1930 – 1960
Celia's Textile Collection



Doily (2013.1.139)
January 25, 2013, 1930 – 1960
Celia's Textile Collection



Doily (2013.1.140)
January 25, 2013, 1930 – 1960
Celia's Textile Collection



Doily (2013.1.141)
January 25, 2013, 1930 – 1960
Celia's Textile Collection



Doily (2013.1.142)
January 25, 2013, 1930 – 1960
Celia's Textile Collection



Doily (2013.1.143)
January 25, 2013, 1930 – 1960
Celia's Textile Collection



Doily (2013.1.144)
January 25, 2013, 1930 – 1960
Celia's Textile Collection



Doily (2013.1.145)
January 25, 2013, 1930 – 1960
Celia's Textile Collection



Doily (2013.1.146)
January 25, 2013, 1930 – 1960
Celia's Textile Collection



Doily (2013.1.147)
January 25, 2013, 1930 – 1960
Celia's Textile Collection



Doily (2013.1.148)
January 25, 2013, 1930 – 1960
Celia's Textile Collection



Doily (2013.1.149)
January 25, 2013, 1930 – 1960
Celia's Textile Collection



Doily (2013.1.150)
January 25, 2013, 1930 – 1960
Celia's Textile Collection



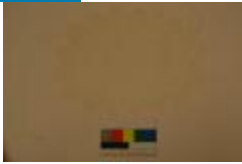
Doily (2013.1.151)
January 25, 2013, 1930 – 1960
Celia's Textile Collection



Doily (2013.1.152)
January 25, 2013, 1930 – 1960
Celia's Textile Collection



Doily (2013.1.153)
January 25, 2013, 1930 – 1960
Celia's Textile Collection



Doily (2013.1.154)
January 28, 2013, 1930 – 1960
Celia's Textile Collection



Doily (2013.1.155)
January 28, 2013, 1930 – 1960
Celia's Textile Collection



Doily (2013.1.156)
January 28, 2013, 1930 – 1960
Celia's Textile Collection



Doily (2013.1.157)
January 28, 2013, 1930 – 1960
Celia's Textile Collection



Doily (2013.1.158)
January 28, 2013, 1930 – 1960
Celia's Textile Collection



Doily (2013.1.159)
January 28, 2013, 1930 – 1960
Celia's Textile Collection



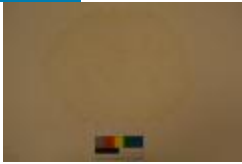
Doily (2013.1.160)
January 28, 2013, 1930 – 1960
Celia's Textile Collection



Doily (2013.1.161)
January 28, 2013, 1930 – 1960
Celia's Textile Collection



Doily (2013.1.162)
January 28, 2013, 1930 – 1960
Celia's Textile Collection



Doily (2013.1.163)
January 28, 2013, 1930 – 1960
Celia's Textile Collection



Doily (2013.1.164)
January 28, 2013, 1930 – 1960
Celia's Textile Collection



Doily (2013.1.165)
January 28, 2013, 1930 – 1960
Celia's Textile Collection



Doily (2013.1.166)
January 28, 2013, 1930 – 1960
Celia's Textile Collection



Doily (2013.1.167)
January 28, 2013, 1930 – 1960
Celia's Textile Collection



Doily (2013.1.168)
January 28, 2013, 1930 – 1960
Celia's Textile Collection



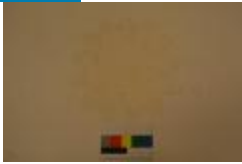
Doily (2013.1.169)
January 28, 2013, 1930 – 1960
Celia's Textile Collection



Doily (2013.1.170)
January 28, 2013, 1930 – 1960
Celia's Textile Collection



Doily (2013.1.171)
January 28, 2013, 1930 – 1960
Celia's Textile Collection



Doily (2013.1.172)
January 28, 2013, 1930 – 1960
Celia's Textile Collection



Doily (2013.1.173)
January 28, 2013, 1930 – 1960
Celia's Textile Collection



Doily (2013.1.174)
January 28, 2013, 1930 – 1960
Celia's Textile Collection



Doily (2013.1.175)
January 28, 2013, 1930 – 1960
Celia's Textile Collection



Doily (2013.1.176)
January 28, 2013, 1930 – 1960
Celia's Textile Collection



Doily (2013.1.177)
January 28, 2013, 1930 – 1960
Celia's Textile Collection



Doily (2013.1.178)
January 28, 2013, 1930 – 1960
Celia's Textile Collection



Doily (2013.1.179)
January 28, 2013, 1930 – 1960
Celia's Textile Collection



Doily (2013.1.180)
January 28, 2013, 1930 – 1960
Celia's Textile Collection



Doily (2013.1.181)
January 28, 2013, 1930 – 1960
Celia's Textile Collection



Doily (2013.1.182)
January 28, 2013, 1930 – 1960
Celia's Textile Collection



Doily (2013.1.183)
January 28, 2013, 1930 – 1960
Celia's Textile Collection



Doily (2013.1.184)
January 28, 2013, 1930 – 1960
Celia's Textile Collection



Doily (2013.1.185)
January 28, 2013, 1930 – 1960
Celia's Textile Collection



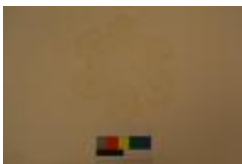
Doily (2013.1.186)
January 28, 2013, 1930 – 1960
Celia's Textile Collection



Doily (2013.1.187)
1930 – 1960
Celia's Textile Collection



Doily (2013.1.188)
January 28, 2013, 1930 – 1960
Celia's Textile Collection



Doily (2013.1.189)
January 28, 2013, 1930 – 1960
Celia's Textile Collection



Doily (2013.1.190)
January 28, 2013, 1930 – 1960
Celia's Textile Collection



Doily (2013.1.191)
January 28, 2013, 1930 – 1960
Celia's Textile Collection



Doily (2013.1.192)
January 28, 2013, 1930 – 1960
Celia's Textile Collection



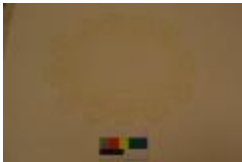
Doily (2013.1.193)
January 28, 2013, 1930 – 1960
Celia's Textile Collection



Doily (2013.1.194)
January 28, 2013, 1930 – 1960
Celia's Textile Collection



Doily (2013.1.195)
January 28, 2013, 1930 – 1960
Celia's Textile Collection



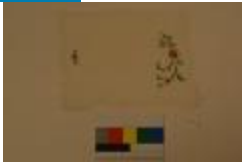
Doily (2013.1.196)
January 28, 2013, 1930 – 1960
Celia's Textile Collection



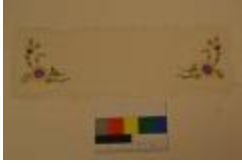
Doily (2013.1.197)
January 28, 2013, 1930 – 1960
Celia's Textile Collection



Doily (2013.1.198)
January 28, 2013, 1930 – 1960
Celia's Textile Collection



Doily (2013.1.199)
1930 – 1960
Celia's Textile Collection



Doily (2013.1.200)
January 28, 2013, 1930 – 1960
Celia's Textile Collection



Doily (2013.1.201)
January 28, 2013, 1930 – 1960
Celia's Textile Collection



Doily (2013.1.202)
January 28, 2013, 1930 – 1960
Celia's Textile Collection



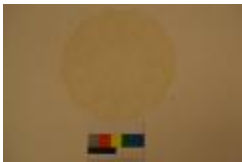
Doily (2013.1.203)
January 28, 2013, 1930 – 1960
Celia's Textile Collection



Doily (2013.1.204)
January 28, 2013, 1930 – 1960
Celia's Textile Collection



Doily (2013.1.205)
January 28, 2013, 1930 – 1960
Celia's Textile Collection



Doily (2013.1.206)
January 28, 2013, 1930 – 1960
Celia's Textile Collection



Doily (2013.1.207)
January 28, 2013, 1930 – 1960
Celia's Textile Collection



Doily (2013.1.208)
January 28, 2013, 1930 – 1960
Celia's Textile Collection



Doily (2013.1.209)
January 28, 2013, 1930 – 1960
Celia's Textile Collection



Doily (2013.1.210)
January 28, 2013, 1930 – 1960
Celia's Textile Collection



Doily (2013.1.211)
January 28, 2013, 1930 – 1960
Celia's Textile Collection



Doily (2013.1.212)
January 28, 2013, 1930 – 1960
Celia's Textile Collection



Doily (2013.1.213)
January 28, 2013, 1930 – 1960
Celia's Textile Collection



Doily (2013.1.214)
January 28, 2013, 1930 – 1960
Celia's Textile Collection



Doily (2013.1.215)
January 28, 2013, 1930 – 1960
Celia's Textile Collection



Doily (2013.1.216)
January 28, 2013, 1930 – 1960
Celia's Textile Collection



Doily (2013.1.217)
January 28, 2013, 1930 – 1960
Celia's Textile Collection



Doily (2013.1.218)
January 28, 2013, 1930 – 1960
Celia's Textile Collection



Doily (2013.1.219)
January 28, 2013, 1930 – 1960
Celia's Textile Collection



Doily (2013.1.220)
January 28, 2013, 1930 – 1960
Celia's Textile Collection



Doily (2013.1.221)
January 28, 2013, 1930 – 1960
Celia's Textile Collection



Doily (2013.1.222)
January 28, 2013, 1930 – 1960
Celia's Textile Collection



Doily (2013.1.223)
January 28, 2013, 1930 – 1960
Celia's Textile Collection



Doily (2013.1.224)
January 28, 2013, 1930 – 1960
Celia's Textile Collection



Doily (2013.1.225)
1930 – 1960
Celia's Textile Collection



Doily (2013.1.226)
January 28, 2013, 1930 – 1960
Celia's Textile Collection



Doily (2013.1.227)
January 28, 2013, 1930 – 1960
Celia's Textile Collection



Towel, Showy (2013.1.228)
January 28, 2013, 1930 – 1960
Celia's Textile Collection



Doily (2013.1.229)
January 28, 2013, 1930 – 1960
Celia's Textile Collection



Doily (2013.1.230)
January 28, 2013, 1930 – 1960
Celia's Textile Collection



Doily (2013.1.231)
January 28, 2013, 1930 – 1960
Celia's Textile Collection



Doily (2013.1.232)
January 28, 2013, 1930 – 1960
Celia's Textile Collection



Doily (2013.1.233)
January 28, 2013, 1930 – 1960
Celia's Textile Collection



Sheet (2013.1.234)
January 28, 2013, 1930 – 1960
Celia's Textile Collection



Doily (2013.1.235)
January 28, 2013, 1930 – 2000
Celia's Textile Collection



Doily (2013.1.236)
January 28, 2013, 1930 – 2000
Celia's Textile Collection



Doily (2013.1.237)
January 28, 2013, 1930 – 2000
Celia's Textile Collection



Doily (2013.1.238)
January 28, 2013, 1930 – 2000
Celia's Textile Collection



Pillowcase (2013.1.239)
January 28, 2013, 1930 – 2000
Celia's Textile Collection



Pillowcase (2013.1.240)
January 28, 2013, 1930 – 2000
Celia's Textile Collection



Doily (2013.1.241)
January 30, 2013, 1930 – 2000
Celia's Textile Collection



Doily (2013.1.242)
January 30, 2013, 1965
Celia's Textile Collection



Doily (2013.1.243)
January 30, 2013, 1930 – 2000
Celia's Textile Collection



Doily (2013.1.244)
January 30, 2013, 1930 – 2000
Celia's Textile Collection



Doily (2013.1.245)
January 30, 2013, 1930 – 2000
Celia's Textile Collection



Doily (2013.1.247)
January 30, 2013, 1930 – 2000
Celia's Textile Collection



Pillowcase (2013.1.248)
January 30, 2013, 1930 – 2000
Celia's Textile Collection



Doily (2013.1.249)
January 30, 2013, 1930 – 2000
Celia's Textile Collection



Doily (2013.1.250)
January 30, 2013, 1930 – 2000
Celia's Textile Collection



Doily (2013.1.251)
January 30, 2013, 1930 – 2000
Celia's Textile Collection



Doily (2013.1.252)
January 30, 2013, 1930 – 2000
Celia's Textile Collection



Doily (2013.1.253)
January 30, 2013, 1930 – 2000
Celia's Textile Collection



Doily (2013.1.254)
January 30, 2013, 1930 – 2000
Celia's Textile Collection



Doily (2013.1.255)
January 30, 2013, 1930 – 2000
Celia's Textile Collection



Doily (2013.1.256)
January 30, 2013, 1930 – 2000
Celia's Textile Collection



Doily (2013.1.257)
January 30, 2013, 1930 – 2000
Celia's Textile Collection



Doily (2013.1.258)
January 30, 2013, 1930 – 2000
Celia's Textile Collection



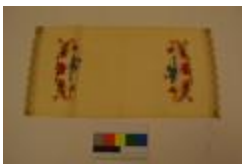
Doily (2013.1.259)
January 30, 2013, 1930 – 2000
Celia's Textile Collection



Doily (2013.1.260)
January 30, 2013, 1930 – 2000
Celia's Textile Collection



Doily (2013.1.261)
January 30, 2013, 1930 – 2000
Celia's Textile Collection



Doily (2013.1.262)
January 30, 2013, 1930 – 2000
Celia's Textile Collection



Doily (2013.1.263)
January 30, 2013, 1930 – 2000
Celia's Textile Collection



Doily (2013.1.264)
January 30, 2013, 1930 – 2000
Celia's Textile Collection



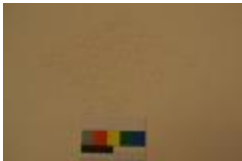
Doily (2013.1.265)
January 30, 2013, 1930 – 2000
Celia's Textile Collection



Doily (2013.1.266)
January 30, 2013, 1930 – 2000
Celia's Textile Collection



Doily (2013.1.267)
January 30, 2013, 1930 – 2000
Celia's Textile Collection



Doily (2013.1.268)
January 30, 2013, 1930 – 2000
Celia's Textile Collection



Doily (2013.1.269)
January 28, 2013, 1930 – 2000
Celia's Textile Collection



Doily (2013.1.270)
January 28, 2013, 1930 – 2000
Celia's Textile Collection



Doily (2013.1.271)
January 28, 2013, 1930 – 2000
Celia's Textile Collection



Doily (2013.1.272)
January 28, 2013, 1930 – 2000
Celia's Textile Collection



Doily (2013.1.273)
January 28, 2013, 1930 – 2000
Celia's Textile Collection



Doily (2013.1.274)
January 28, 2013, 1930 – 2000
Celia's Textile Collection



Doily (2013.1.275)
January 28, 2013, 1930 – 2000
Celia's Textile Collection



Doily (2013.1.276)
January 28, 2013, 1930 – 2000
Celia's Textile Collection



Doily (2013.1.277)
January 28, 2013, 1930 – 2000
Celia's Textile Collection



Doily (2013.1.278)
January 28, 2013, 1930 – 2000
Celia's Textile Collection



Doily (2013.1.279)
January 28, 2013, 1930 – 2000
Celia's Textile Collection



Pillowcase (2013.1.280)
January 28, 2013, 1930 – 2000
Celia's Textile Collection



Pillowcase (2013.1.281)
January 28, 2013, 1930 – 2000
Celia's Textile Collection



Tablecloth (2013.1.282)
January 28, 2013, 1930 – 2000
Celia's Textile Collection



Tablecloth (2013.1.283)
January 28, 2013, 1930 – 2000
Celia's Textile Collection



Runner, Table (2013.1.284)
January 28, 2013, 1930 – 2000
Celia's Textile Collection



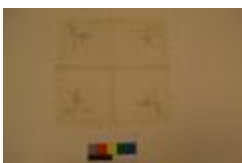
Doily (2013.1.96)
January 23, 2013, 1930 – 1960
Celia's Textile Collection



Doily (2013.1.97)
January 23, 2013, 1930 – 1960
Celia's Textile Collection



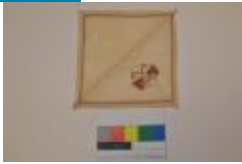
Doily (2013.1.98)
January 23, 2013, 1930 – 1960
Celia's Textile Collection



Doily (2013.1.99)
January 23, 2013, 1930 – 1960
Celia's Textile Collection



Napkin (2013.10.1)
1903 – 1985
George's Collection



Napkin (2013.10.2)
1903 – 1985
George's Collection



Napkin (2013.10.3)
1903 – 1985
George's Collection



Napkin (2013.10.4)
1903 – 1985
George's Collection



Napkin (2013.10.5)
1903 – 1985
George's Collection



Napkin (2013.10.6)
1903 – 1985
George's Collection



Tablecloth (2013.10.7)
1903 – 1985
George's Collection



Doily (2013.10.8)
1903 – 1985
George's Collection



Doily (2013.10.9)
1903 – 1985
George's Collection



Photograph (2013.12.27)
1962,



Photograph (2013.12.28)
1962,



Photograph (2013.12.29)
1962,



Certificate, Award (2013.2.1)
January 16, 2013, 1969



Photograph (2013.2.11)
January 22, 2013, 1965



Medal, Political (2013.2.13)
January 22, 2013, 1962



Plaque (2013.2.21)
January 25, 2013, 1960



Pin (2013.2.22)
January 25, 2013, 1930 – 1980



Photograph (2013.2.23)
January 28, 2013, 1964



Medal, Political (2013.2.24)
January 28, 2013, 1965



Certificate (2013.2.25)
January 28, 2013, 1962



Certificate (2013.2.26)
January 28, 2013, 1962



Photograph (2013.2.36)
February 9, 1962



Photograph (2013.2.37)
1962



Photograph (2013.2.5)
1965



Photograph (2013.2.6)
January 26, 1965



Photograph (2013.2.7)
January 26, 1965



Photograph (2013.2.8)
January 26, 1965



Photograph (2013.2.9)
January 26, 1965



Painting (2013.20.1)
1964 – 1999



Photograph (2013.21.1)
1967,



Photograph (2013.21.10)
1967,



Photograph (2013.21.11)
1967,



Photograph (2013.21.12)
1967,



Photograph (2013.21.13)
1967,



Photograph (2013.21.14)
1967,



Photograph (2013.21.15)
1967,



Photograph (2013.21.16)
1967,



Photograph (2013.21.17)
1967,



Photograph (2013.21.18)
1967,



Photograph (2013.21.19)
1967,



Photograph (2013.21.2)
1967



Photograph (2013.21.20)
1967,



Photograph (2013.21.21)
1967,



Photograph (2013.21.22)
1967,



Photograph (2013.21.23)
1967,



Photograph (2013.21.24)
1967,



Photograph (2013.21.25)
1967,



Photograph (2013.21.26)
1967,



Photograph (2013.21.27)
1967,



Photograph (2013.21.3)
1967,



Photograph (2013.21.4)
1967,



Photograph (2013.21.5)
1967,



Photograph (2013.21.6)
1967,



Photograph (2013.21.7)
1967,



Photograph (2013.21.8)
1967,



Photograph (2013.21.9)
1967,



Medal, Commemorative (2013.25.1)
1960,



Box, Cigarette (2013.5.10)
1960 – 1986
Pete Poulos



Card, Membership (2013.5.100)
1966,
Pete Poulos



Coin (2013.5.106)
1968,
Pete Poulos Collection



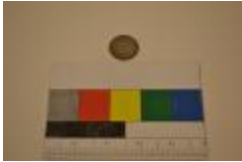
Coin (2013.5.107)
1968,
Pete Poulos Collection



Coin (2013.5.108)
1968,
Pete Poulos Collection



Box, Cigarette (2013.5.11)
1960 – 1986
Pete Poulos



Coin (2013.5.119)
1960,
Pete Poulos Collection



Box, Cigarette (2013.5.12)
1960s,
Pete Poulos



Box, Cigarette (2013.5.13)
1960 – 1980
Pete Poulos



Coin (2013.5.2)
1969,
Pete Poulos



Card, Membership (2013.5.24)
1963,
Pete Poulos



Coin (2013.5.3)
1964,
Pete Poulos



Coin (2013.5.5)
1969,
Pete Poulos



Coin (2013.5.7)
1966,
Pete Poulos



Coin (2013.5.8)
1966,
Pete Poulos



Photograph (2013.5.88)
1960s,
Pete Poulos



Coin (2013.5.9)
1967,
Pete Poulos



Coin (2014.1.34)
1964,



Coin (2014.1.35)
1966,



Coin (2014.1.50)
1964,



Coin (2014.1.51)
1964,



Coin (2014.1.68)
1960,



Coin (2014.1.69)
1960,



Photograph (2015.15.16)
1945 – 1965



Stamp Postage (2015.21.1)
1940 – 2005



Icon (2015.26.4)
1960,



Glass shot (2017.12.1)
1968 – 2016
The Parthenon Restaurant Collection



Menu (2017.12.10)
1968 – 2016
The Parthenon Restaurant Collection



Menu (2017.12.11)
1968 – 2016
The Parthenon Restaurant Collection



Postcard (2017.12.12)
1968 – 2016
The Parthenon Restaurant Collection



Postcard (2017.12.13)
1968 – 2016
The Parthenon Restaurant Collection



Menu (2017.12.14)
1968 – 2016
The Parthenon Restaurant Collection



Menu (2017.12.15)
1968 – 2016
The Parthenon Restaurant Collection



Card Business (2017.12.16)
1968 – 2016
The Parthenon Restaurant Collection



Card Business (2017.12.17)
1968 – 2016
The Parthenon Restaurant Collection



Receipt (2017.12.18)
1968 – 2016
The Parthenon Restaurant Collection



Receipt (2017.12.19)
1968 – 2016
The Parthenon Restaurant Collection



Glass, shot (2017.12.2)
1968 – 2016
The Parthenon Restaurant Collection



Card, Store (2017.12.20)
1968 – 2016
The Parthenon Restaurant Collection



Card, Store (2017.12.21)
1968 – 2016
The Parthenon Restaurant Collection



Menu (2017.12.28)
1968 – 2016
The Parthenon Restaurant Collection



Menu (2017.12.29)
1968 – 2016
The Parthenon Restaurant Collection



Holder, paper (2017.12.3)
1968 – 2016
The Parthenon Restaurant Collection



Menu (2017.12.32)
1968 – 2016
The Parthenon Restaurant Collection



Menu (2017.12.33)
1968 - 2016

The Parthenon Restaurant Collection



Sign (2017.12.39)
1968 - 2016

The Parthenon Restaurant Collection



Matchbook (2017.12.4)
1968 - 2016

The Parthenon Restaurant Collection



Book, Menu (2017.12.40)
1968 - 2016

The Parthenon Restaurant Collection



Book, Menu (2017.12.41)
1968 - 2016

The Parthenon Restaurant Collection



Book, Menu (2017.12.42)
1968 - 2016

The Parthenon Restaurant Collection



Matchbook (2017.12.5)
1968 – 2016
The Parthenon Restaurant Collection



Clipping, Newspaper (2017.12.50)
1968 – 2016
The Parthenon Restaurant Collection



Record, 33 1/3 RPM (2017.12.6)
1968 – 2016
The Parthenon Restaurant Collection



Record, 33 1/3 RPM (2017.12.7)
1968 – 2016
The Parthenon Restaurant Collection



Record, 33 1/3 RPM (2017.12.8)
1968 – 2016
The Parthenon Restaurant Collection



Record, 33 1/3 RPM (2017.12.9)
1968 – 2016
The Parthenon Restaurant Collection



Book (2017.7.28)
1967
Theano Margaris Collection



Pastel (2020.2.1)
1967
George Kokines Collection



Print (2021.1.1)
1967



Print (2021.1.10)
1967



Print (2021.1.11)
1967



Print (2021.1.12)
1967



Print (2021.1.13)
1967



Print (2021.1.14)
1967



Print (2021.1.15)
1967



Print (2021.1.17)
1967



Print (2021.1.18)
1967



Print (2021.1.19)
1967



Print (2021.1.2)
1967



Print (2021.1.20)
1967



Print (2021.1.22)
1967



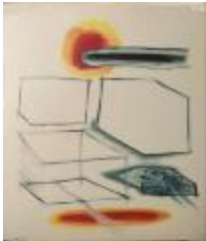
Print (2021.1.23)
1969



Print (2021.1.24)
1969



Print (2021.1.25)
1969



Print (2021.1.4)
1967



Print (2021.1.5)
1967



Print (2021.1.6)
1967



Print (2021.1.8)
1967



Print (2021.1.9)
1967



Newspaper (2021.26.17)
October 14, 1966



Disc, Compact (2021.4.1)
1966



Disc, Compact (2021.4.2)
1966



Disc, Compact (2021.4.3)
1966



Disc, Compact (2021.4.4)
1966



Disc, Compact (2021.4.5)
1966



Disc, Compact (2021.4.6)
1966



Disc, Compact (2021.4.7)
1966



Disc, Compact (2021.4.8)
1963



Menu (2022.15.3)
1953 – 2007



Card, Business (2022.15.5)
1953 – 2007



Menu (2022.24)
1953 – 2007



Disc, Compact (2022.7.1)
1963



Disc, Compact (2022.7.2)
1963



Photograph (2022.8.7)
1963
James D. Tanos Collection



Photograph (2022.8.8)
March 26, 1964
James D. Tanos Collection



Reel, Film (2022.9)
1963



Magazine (2023.1.1)
December 1961



Book (2023.16.3)
1963



Bottle, Impossible (2023.5.2)
1940 - 1960



Book (2023.7.1)
May 21, 1967



Book (2023.7.2)
June 6, 1968



Book (2023.7.3)
June 21, 1969



Puppet, Shadow (2023.8.2)
1967



Puppet, Shadow (2023.8.3)
1967



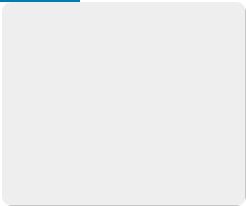
Puppet, Shadow (2023.8.4)
1967



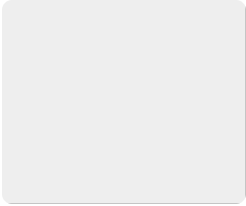
Puppet, Shadow (2023.8.5)
1967



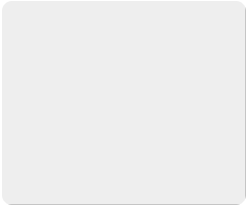
Puppet, Shadow (2023.8.6)
1967



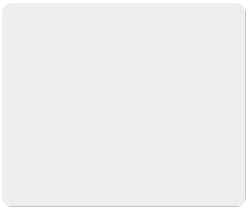
book (2156)
1969,



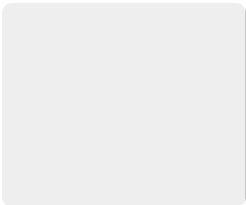
Book (2188)
1967,



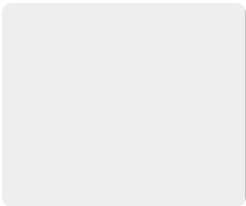
book (220742461)
1962–1967,



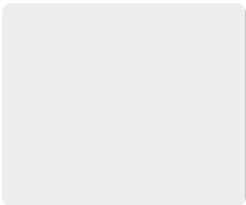
Book (2282)
1960,



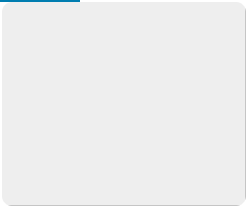
Book (2321)
1964,



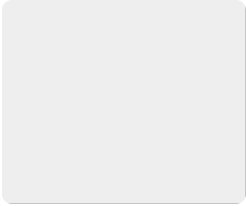
Book (2322)
1969,



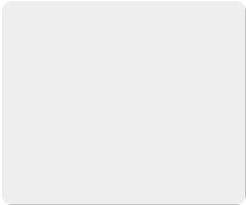
Book (2323)
1962,



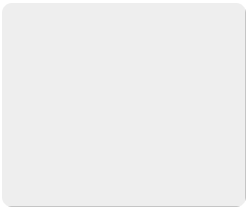
Book (2324)
1966,



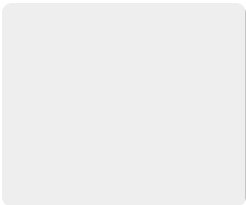
Book (2366)
1962,



Book (236611)
1964,



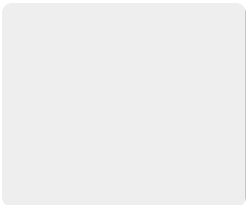
Book (2405)
1962,



Book (2509)
1961,



Book (2522)
20th century,



Book (2589)
1968,



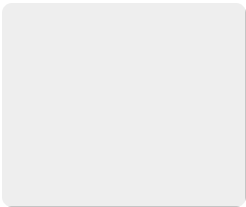
Book (2590)
20th century,



Book (2601)
20th century,



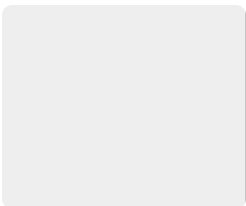
Book (2603)
20th century,



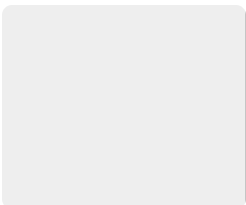
Book (2608)
1967,



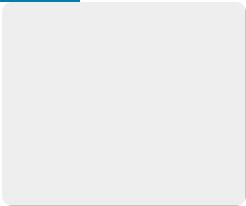
Book (2619)
20th century,



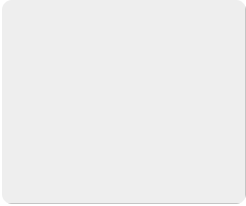
Book (2763472)
1968,
English



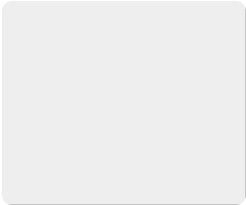
book (299370)
1965,



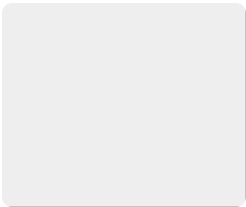
Book (41053)
1968,



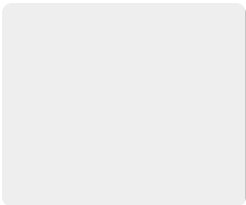
Book (422543)
1963,



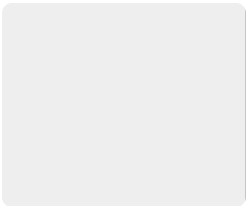
Book (4635785)
1963,



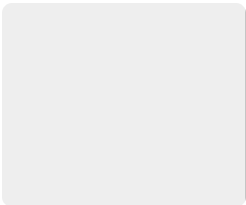
book (5044528)
1964,



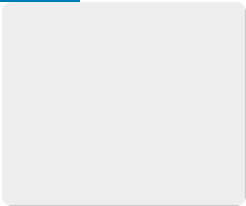
book (5886485)
circa 1964,



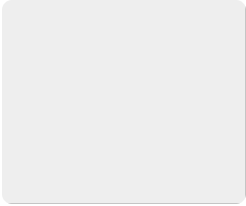
book (636177)
1964,



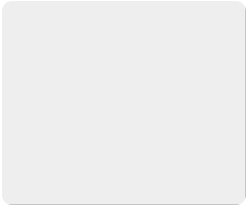
book (7224147)
1963,



book (926737)
1964,



book (9740)
1969,



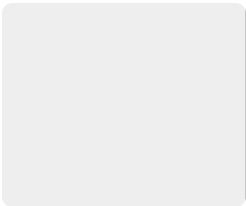
book (985969)
1964,



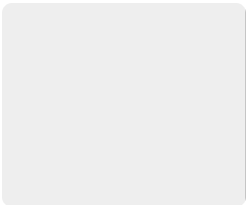
Book (APX 2714 K)
1960,



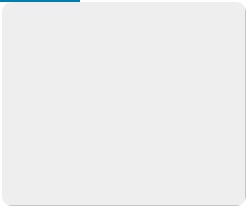
Book (APX 37 U)
1961,



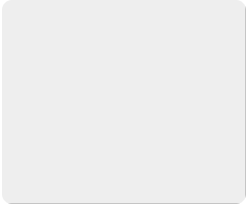
Book (BEI-580-V)
1968,



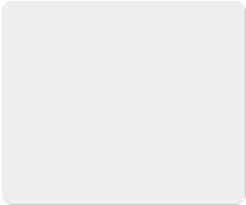
Book (BEI-93-LE)
1965,



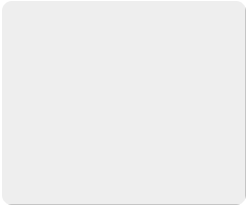
Book (BL0782.G71963)
1963,
English



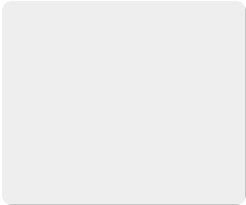
Book (BL0782.G85)
1967,



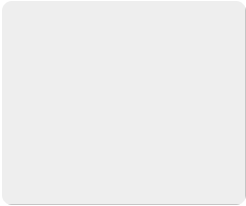
Book (BR0141.D631967)
1967,
English



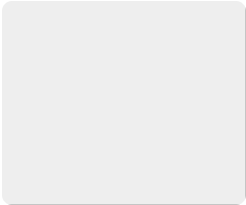
Book (BV0195.G741967)
1967,
English



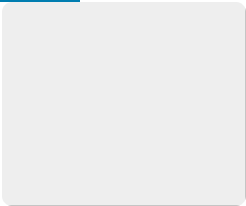
Book (BX0240.N61961)
after 1961,
English



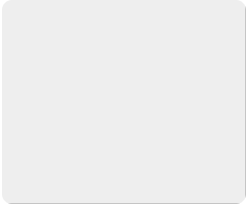
Book (BX0240.N61961c.2)
after 1961,
English



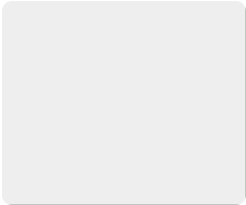
Book (BX0240.N861962)
1962,
English



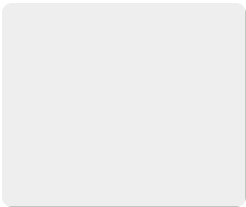
Book (BX0240.N861962c.2)
1962,
English



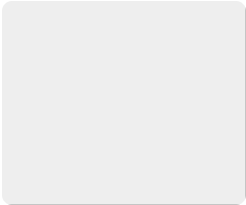
Book (BX0290.S3731963)
1963,
English



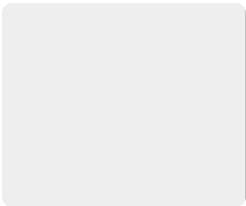
Book (BX0303.G41966)
1966,
English



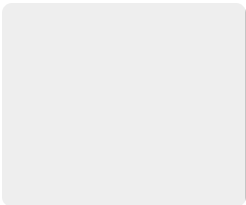
Book (BX0303.N851966)
1966,
English



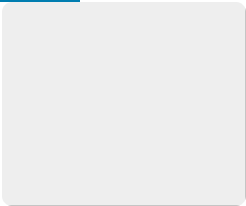
Book (BX0320.S8)
1965,
English



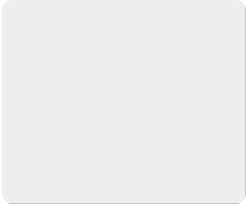
Book (BX0324.M3131966)
1966,
English



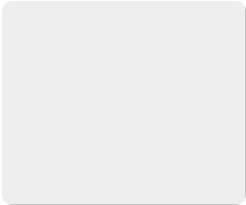
Book (BX0325.O5no.4)
1960s,
English



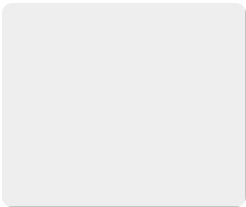
Book (BX0355.A51968)
1968,
English



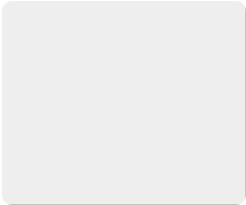
Book (BX0375.L4)
1966,
Hellenic Museum Collection



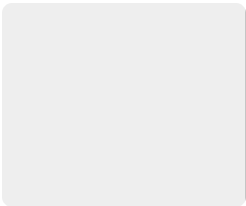
Book (BX0375.L4c.2)
1966,
Hellenic Museum Collection



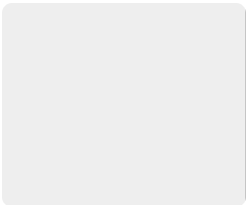
Book (BX0395.A8D3)
1969,
English



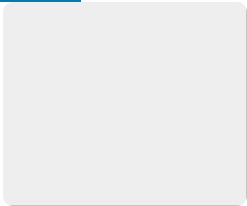
Book (BX0738.G74M31967x)
1967,
English



Book (CB0311.C541954)
1960,
English



Book (CD5363 .K4)
1960,
English



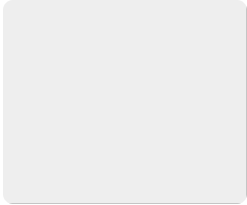
Book (CD5369.B6)
1963,
English



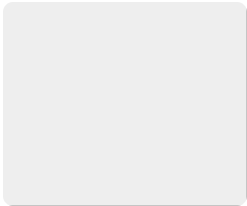
Book (CJ 241 .R4)
1963
English



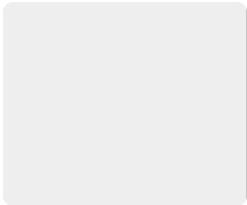
Book (CJ 335 .K7)
1966



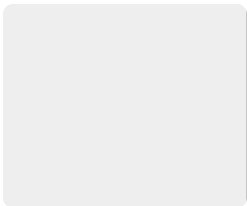
Book (CJ2887.G3)
1969,
English



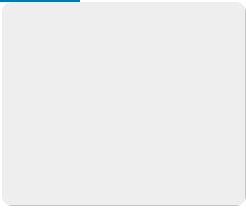
Book (CJ2928.G5L35)
1968,
English



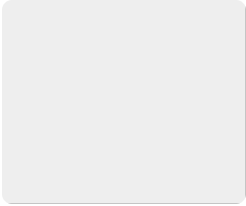
Book (CN0384.M4)
1966,
English



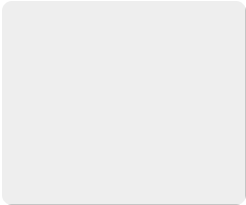
Book (CS0071.B775)
1969,
English



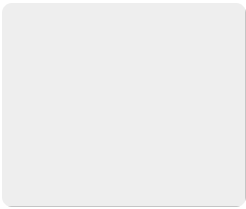
Book (D0053.A2K31966)
1966,
English



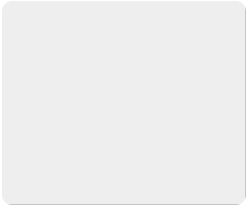
Book (D0802.G8T73)
1969,
English



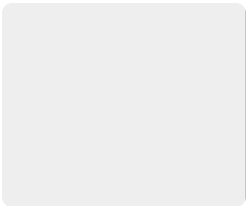
Book (DD0256.R61962)
1962,
English



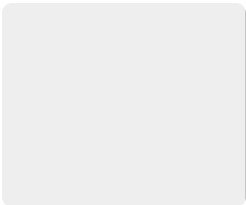
Book (DE0059.N3)
1968,
Hellenic Museum Collection



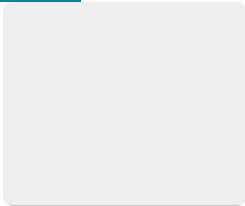
Book (DF0027.P41965v.2)
1965,
English



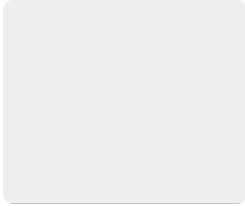
Book (DF0077.B653v.1)
1957–1961,
English



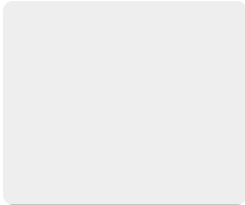
Book (DF0077.B653v.1c.2)
1957–1961,
English



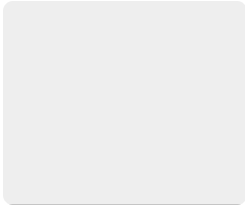
Book (DF0077.B653v.2)
1957 – 1961,
English



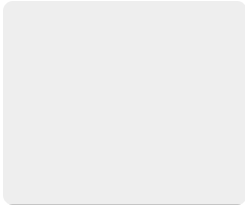
Book (DF0077.B653v.3)
1957 – 1961,
English



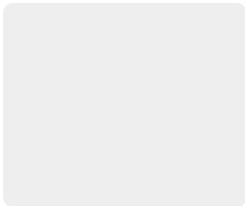
Book (DF0078.C5131965)
1965,
English



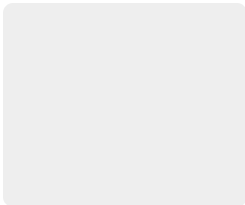
Book (DF0078.F55131965)
1965,



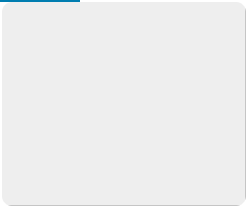
Book (DF0079.A54x)
1961,
English



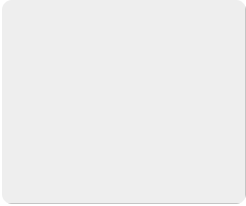
Book (DF0105.T51963)
1963,
English



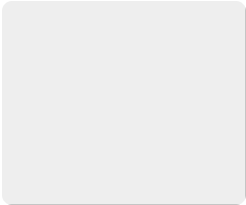
Book (DF0221.C8.M3191962)
1962,
English



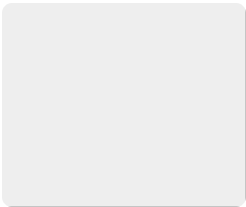
Book (DF0221.C8P331969c.2)
1969,
English



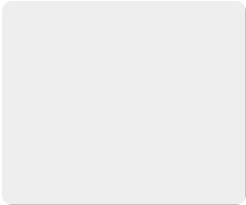
Book (DF0221.H37P53)
1964,
English



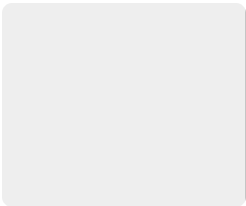
Book (DF0229.T6R491960)
1960,
English



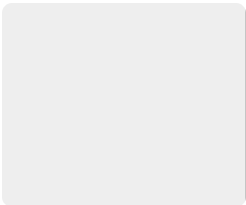
Book (DF0234.D313)
1966,
English



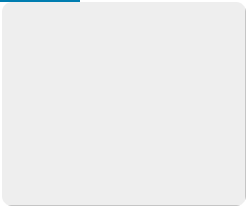
Book (DF0261.C65A61960)
1960,
English



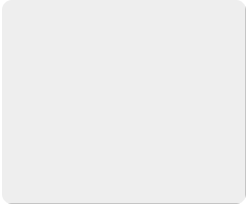
Book (DF0261.O5F6131964)
1964,
English



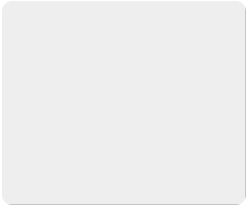
Book (DF0261.O5F6131964c.2)
1964,
English



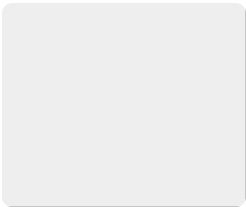
Book (DF0287.A23A4371961no.7)
1961,
English



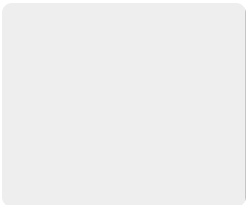
Book (DF0287.A23A53no.4)
1960,
English



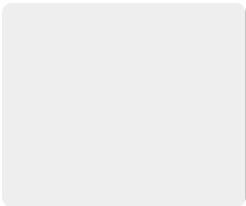
Book (DF0287.A23A55no.10)
1966,
English



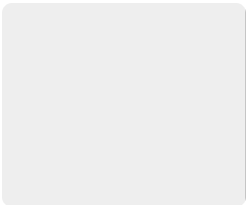
Book (DF0287.A23A65x1968no.11)
1968,
English



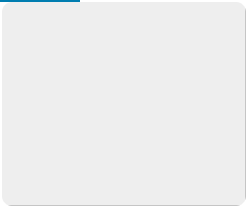
Book (DF0287.A23G7no.6)
1961,
English



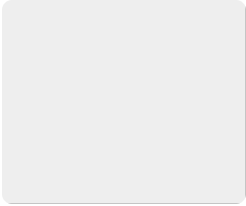
Book (DF0287.A23G7no.6c.2)
1961,
English



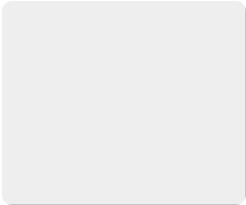
Book (DF0287.A23O35)
1964,
English



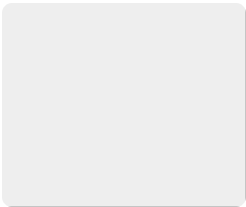
Book (DF0287.A23O35c.2)
1964,
English



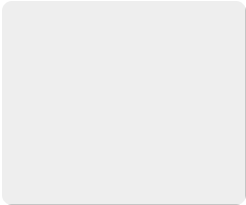
Book (DF0287.A2T3)
1969,
English



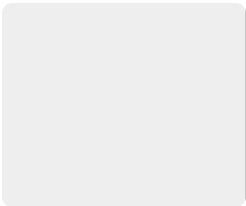
Book (DF0289.H371960no.5)
1960,
English



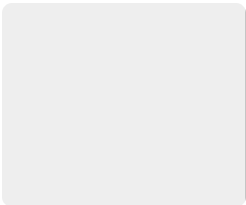
Book (DF0289.H371960no.5c.2)
1960,
English



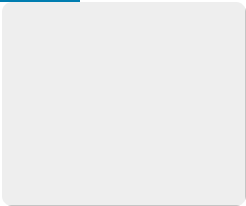
Book (DF0504.A761963)
1963,
English



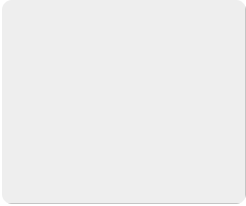
Book (DF0521.H81967)
1967,
English



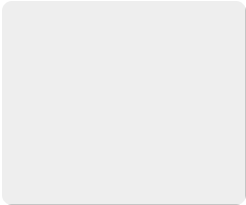
Book (DF0552.J465)
1963,
English



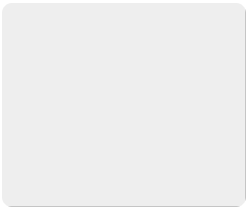
Book (DF0716.C71964)
1964,
English



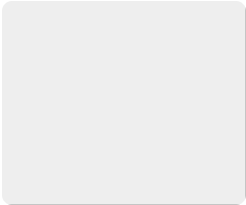
Book (DF0716.R6)
1967,
English



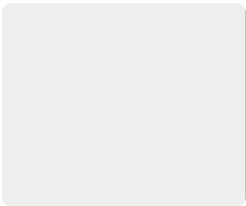
Book (DF0716.T68)
1961,
English



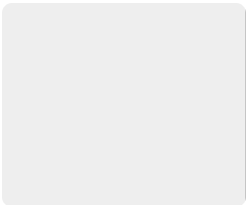
Book (DF0726.M631964)
1964,
English



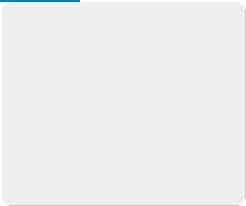
Book (DF0727.B76)
1966,
English



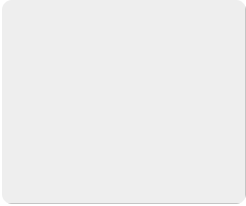
Book (DF0727.F41966a)
1966,
English



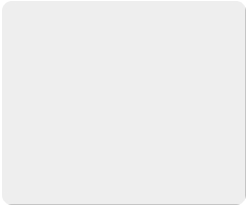
Book (DF0727.G731961)
1961,
English



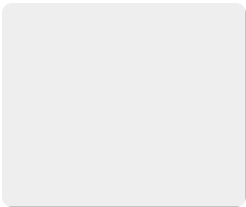
Book (DF0727.G731962)
1962,
English



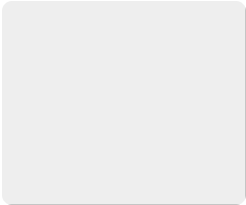
Book (DF0727.G7441960)
1960,
English



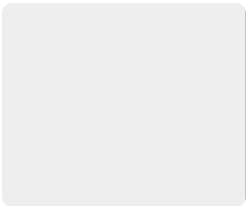
Book (DF0727.G7441960c.2)
1960,
English



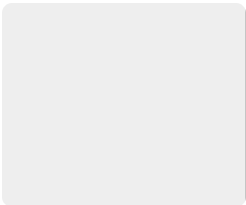
Book (DF0727.G7441960c.3)
1960,
English



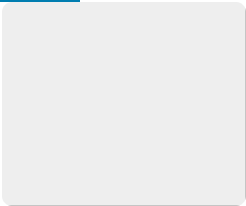
Book (DF0727.G7441960c.4)
1960,
English



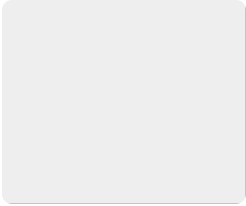
Book (DF0727.K8)
1969,
English



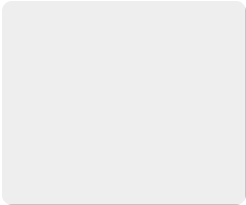
Book (DF0727.P381965)
1965,
English



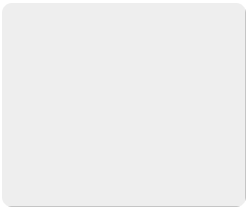
Book (DF0727.R3)
1962,
English



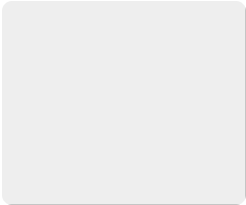
Book (DF0741.K971970)
20th century,
English



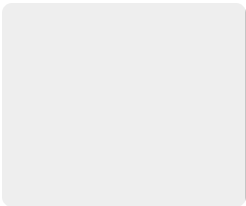
Book (DF0785.T86x1969)
1969,
English



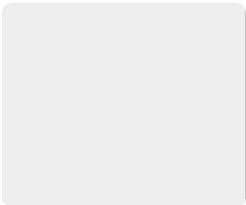
Book (DF0787.U5C6)
1966,
English



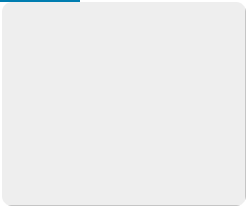
Book (DF0802.C33)
1968,
English



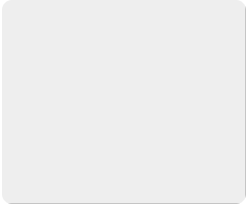
Book (DF0802.C33c.2)
1968,
English



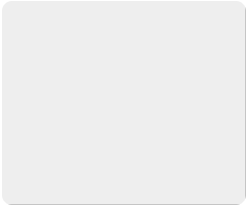
Book (DF0806.J37c.1)
1965,
English



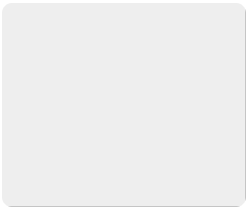
Book (DF0806.J37c.2)
1965,
English



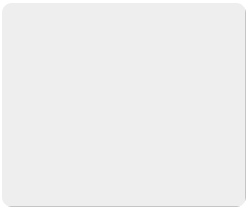
Book (DF0806.J37c.3)
1965,
English



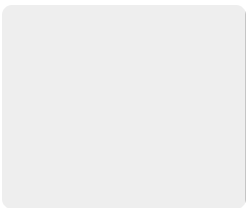
Book (DF0806.J37c.4)
1965,
English



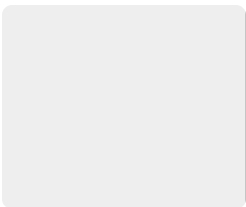
Book (DF0823.P4)
1968,
English



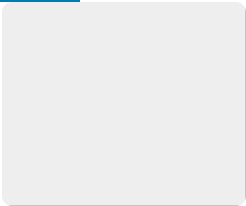
Book (DF0850.K65)
1965,
English



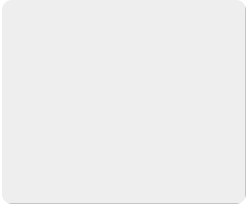
Book (DF0901.C7B35)
1965,
English



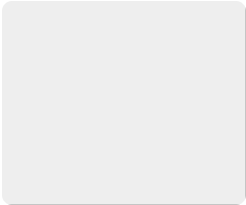
Book (DF0901.P4K3131965)
1965,
English



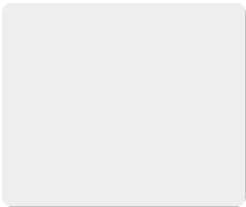
Book (DG0207.T2R491964)
1964,
English



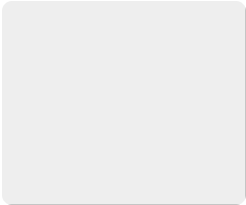
Book (DR0431.M461962)
1962,
English



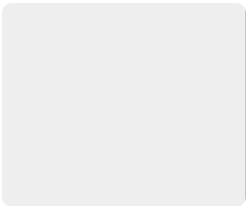
Book (DR0701.S5R78)
1965,
English



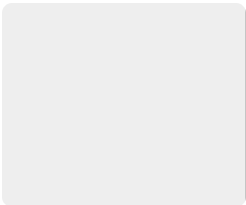
Book (DR0741.A87V3)
1963,
English



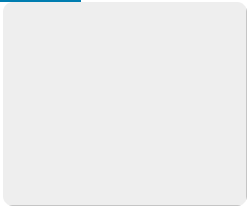
Book (DR0966.S531967)
1967,
English



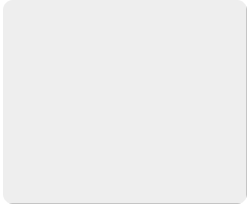
Book (DS0051.I92Y45131969)
1969,
English



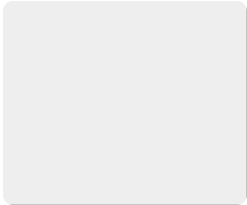
Book (DS0054.A3A551968)
1968,
English



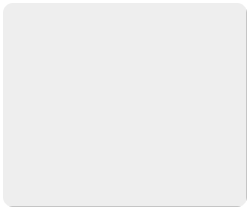
Book (DS0054.G76c.1)
1964,
English



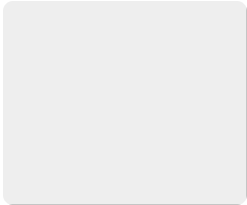
Book (DS0054.K481962c.1)
1962,
English



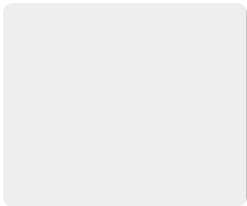
Book (DS0054.K481962c.2)
1962,
English



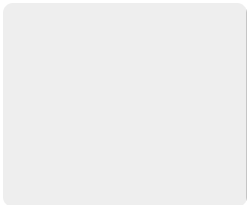
Book (DS0054.L287C9)
1965,
English



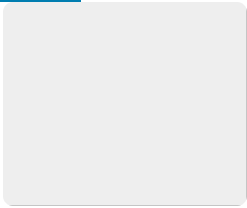
Book (DS0054.R681962)
1962,
English



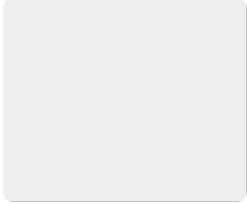
Book (DS0156.I6B4c.1)
1966,
English



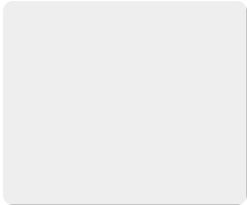
Book (DS0156.I6B4c.2)
1966,
English



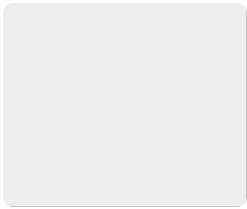
Book (E0184.G7H371966)
1966,
English



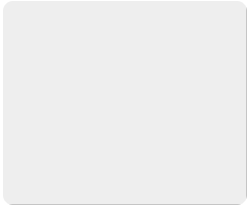
Book (E184.G7S291964)
1964,
English



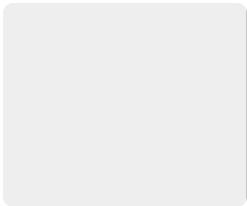
Book (EKP-550-PD)
1960,



Book (EKP-555-SE)
20th century,



Book (F0869.S39C56c.1)
1962,
English



Book (F0869.S39C56c.2)
1962,
English



Flabellum (F2012.11)
1900–2012



Flabellum (F2012.12)
1900 – 2012



Trophy (F2013.35)
1962,



Trophy (F2013.36)
1968,



Flag (F2013.7)
1927 – 2000



Flag (F2013.8)
1927 – 2000



Amplifier, Audio (F2013.86)
circa 1969,



Recorder, Tape (F2013.94.A)
circa 1960,



Microphone (F2013.94.B)
circa 1960,



Tape (F2013.94.C)
circa 1960,



Sticker, Bumper (F2014.119.1)
circa 1961,



Sticker, Bumper (F2014.122.1)
circa 1960,



Sticker, Bumper (F2014.122.2)
circa 1960,



Doll (F2014.143)
1925 – 1983



Album, Photograph (F2014.158)
circa 1966,



Trophy (F2014.26)
1963,



Trophy (F2014.27)
1968,



Photograph (F2014.28)
1860 – 1970



Photograph (F2014.30)
1860 – 1970



Pot, Paste (F2014.4)
1890 – 1960



Pot, Paste (F2014.5)
1890 – 1960



Certificate, Achievement (F2014.89)
December 7, 1964,



Certificate, Achievement (F2014.94)
December 7, 1964,



Certificate, Achievement (F2015.14)
May 31, 1960,



Photograph (F2015.19)
1964,



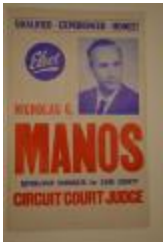
Photograph (F2015.20)
1964,



Album, Photograph (F2015.23)
1937-1987



Certificate (F2015.34)
1960,



Poster, Political (F2015.4)
circa 1968,



Photograph (F2015.50)
1962,



Photograph (F2015.67)
circa 1960,



Pin, Campaign (F2016.10)
1966-1977



Photograph (F2016.100)
1948 – 1972



Doll (F2016.117)
1950 – 1970



Certificate (F2016.158)
1960 – 1961



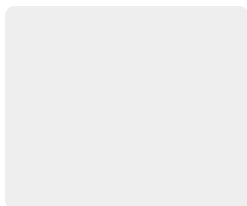
Pin, Political (F2016.6)
1962 – 1992



Poster, Political (F2016.62)
1968,



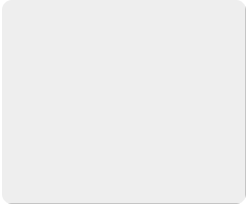
Photograph (F2022.2)
1930 – 1967



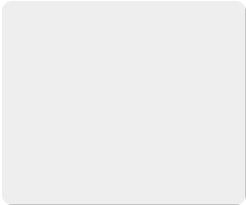
Book (G.P 3487 R)
1961,



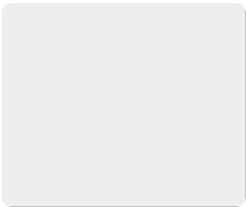
Book (G.P. 5300 H)
1963,



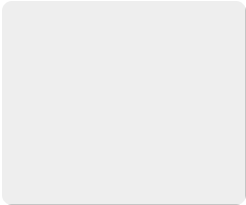
Book (G1033.M171986)
1967,
English



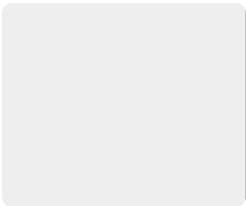
Book (GF0071.C3)
1966,
English



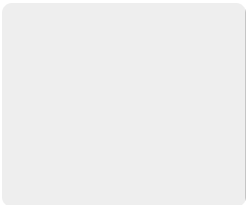
Book (HG0243.M4)
1966,
English



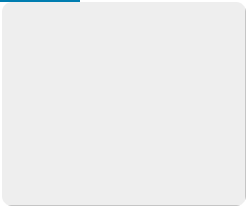
Book (HS2063.A53M361966)
1966,
English



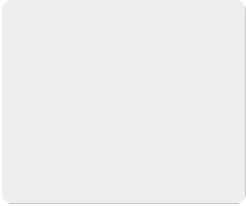
Book (IST 3691 F)
1960,



Book (IST 915)
1960,



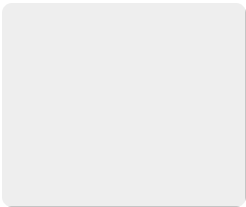
Book (JN5016.L4)
1969,
English



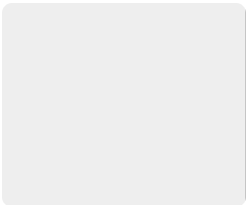
Book (JX0920.C9A55)
1960,
English



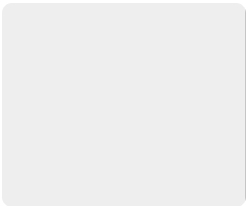
Book (KALL 563 HD)
1963,



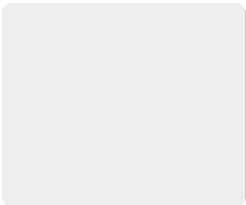
Book (ML3613.A4R8)
1967,
English



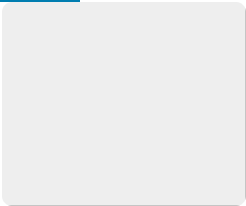
Book (N.F-1166-FL)
20th century,



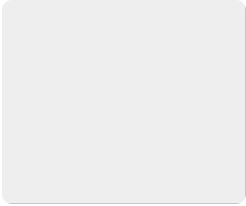
Book (N.F-371-GLE)
1960s,



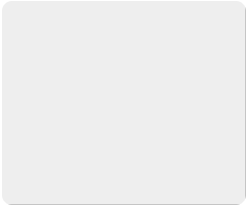
Book (N.F-591-TKI)
1966,



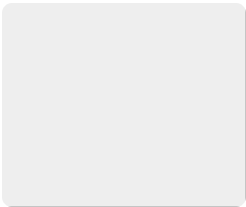
Book (N.F-635-TCB)
1960,



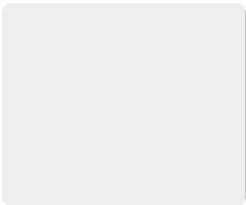
Book (N.F-890-UGE)
1967,



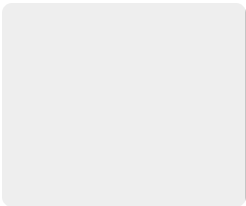
Book (N0610.A547)
1964,
English



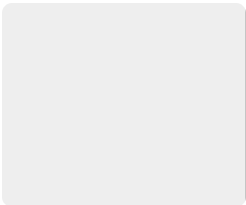
Book (N5604.G8A861968)
1968,
English



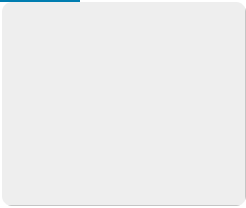
Book (N5630.B58a1964)
1964,
English



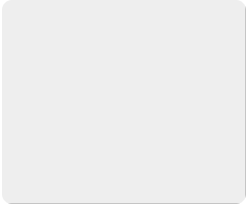
Book (N5630.S35)
1965,
English



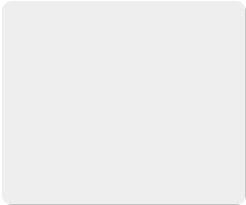
Book (N5750.M34)
1965,
English



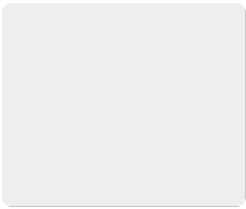
Book (N5851.V4c.1)
1968,
English



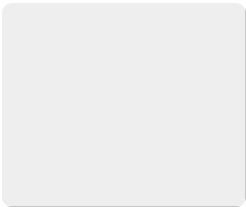
Book (N5851.V4c.2)
1968,
English



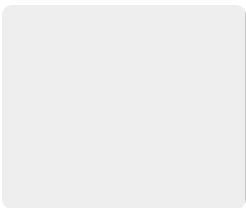
Book (N6250.G69131967)
1967,
English



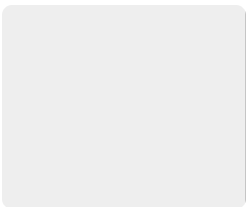
Book (N6250.G731964v.1n.1)
1964,
English



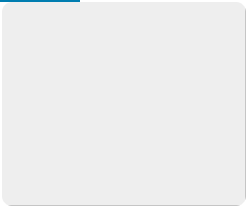
Book (N6250.G731964v.1n.2)
1964,
English



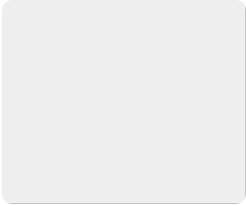
Book (N6250.G731964v.1n.3)
1964,
English



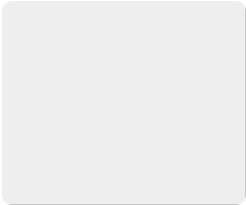
Book (N6250.G731964v.1n.4)
1964,
English



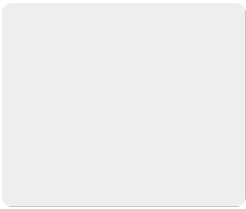
Book (N6250.R471968)
1968,
English



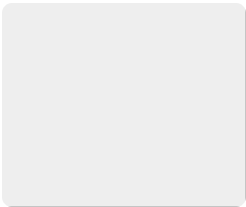
Book (NA0270.S3 1967)
1967,
English



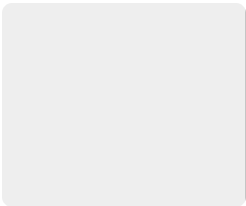
Book (NA0283.A27c.1)
1962,
English



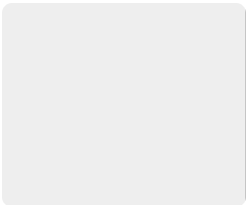
Book (NA0283.A27c.2)
1962,
English



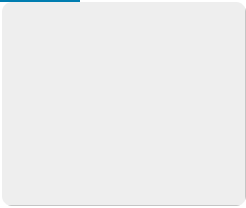
Book (NA3780.G7)
1964,
English



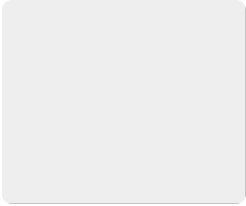
Book (NA5401.P31969)
1969,
English



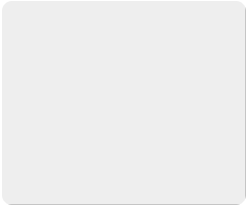
Book (NB0090.A271966)
1966,
English



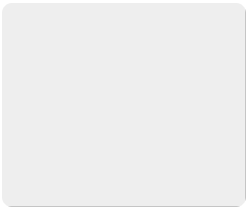
Book (NB0090.F931964)
1964,
English



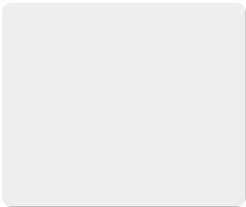
Book (NB0090.J71966)
1966,
English



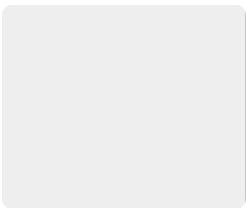
Book (NB1370.R5)
1961,
English



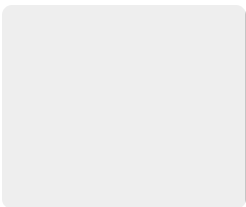
Book (ND0110.D413)
1962,
English



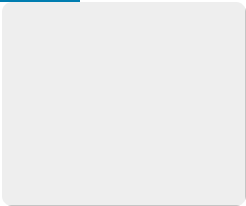
Book (NK0610.A5)
1968,
English



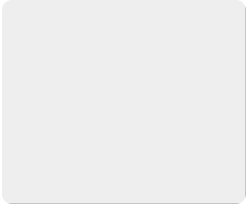
Book (NK0955.G713)
1969,
English



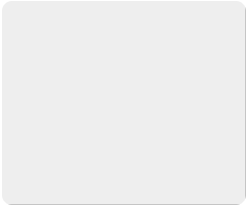
Book (NK3840.L351963)
1963,
English



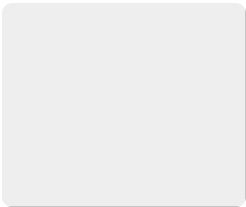
Book (NK7307.H53)
1965,
English



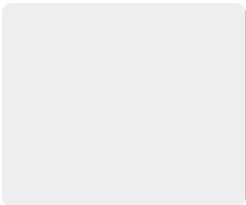
Book (NOM-2086-NI)
1968,



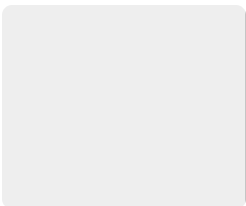
Book (O.K.E.*-2803-U)
1962,



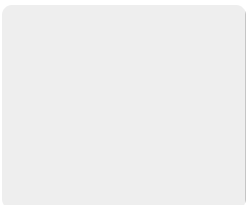
Book (O.K.E.4130QK)
1967,



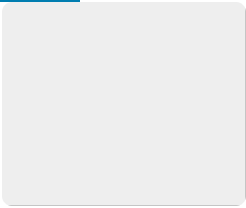
Book (P 1080 RF)
1968,



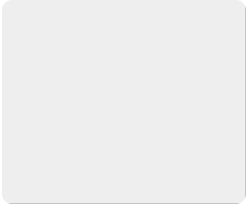
Book (PA0057.G4)
1962,
English



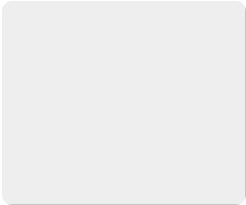
Book (PA0273.J41961)
1961,
English



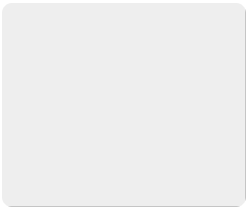
Book (PA1058 .T44 1964)
1964,
English



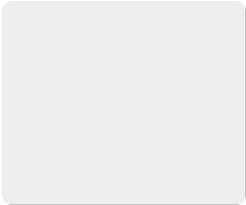
Book (PA1139.E5D461961)
1961,
English



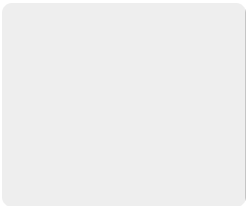
Book (PA1139.E5D531965)
1965,
English



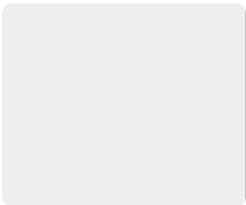
Book (PA3105.H8)
1969,
English



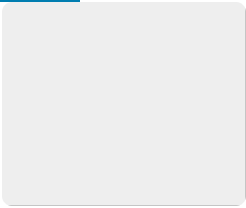
Book (PA3133.S5)
1964,
English



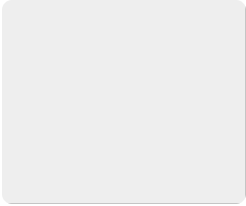
Book (PA3621.R5)
after 1966,
English



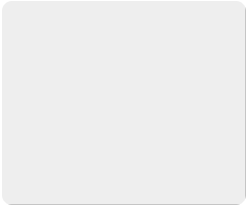
Book (PA3626.A2G7)
1960,
English



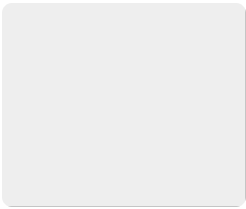
Book (PA3975.A21960)
1960,
English



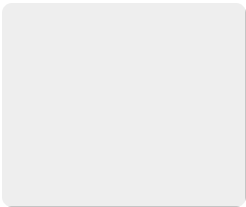
Book (PA4025.A2L351961)
1961,
English



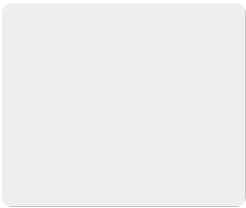
Book (PA4264.A2)
1965,



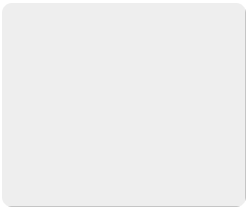
Book (PA5255.B31968)
1968,
English



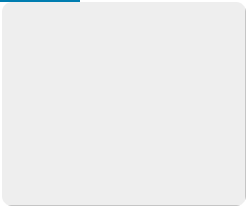
Book (PA5295.M59)
1962,
English



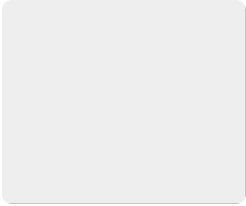
Book (PA5610.K2Z59)
1964,



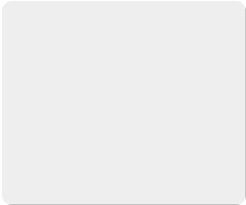
Book (PA5610.K39B5231962)
1962,
English



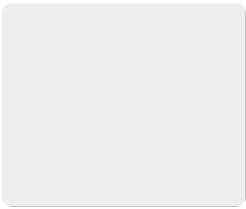
Book (PA5610.K39C51962)
1962,
English



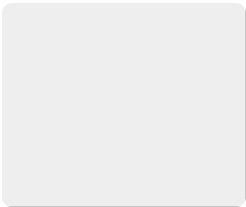
Book (PA5610.K39L38)
1960,
English



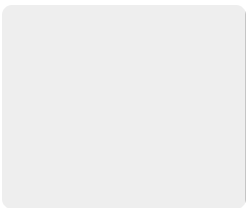
Book (PA5610.K39P4131962c.1)
1962,
English



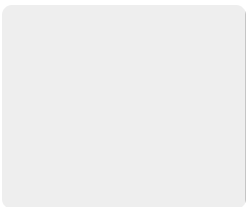
Book (PA5610.K39P4131962c.2)
1962,
English



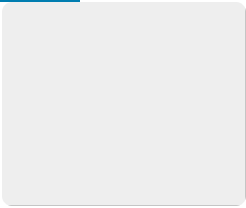
Book (PA5610.P35P69c.1)
1961,
English



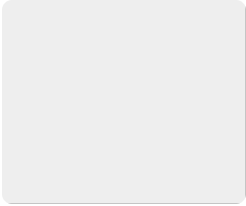
Book (PA5610.P35P69c.2)
1961,
English



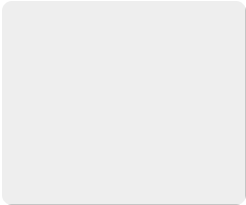
Book (PA5610.S18M413)
1968,
English



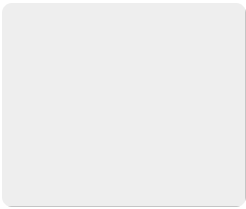
Book (PA5610.S36A271969c.1)
1969,
English



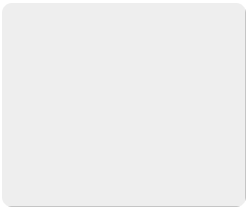
Book (PA5610.S36A271969c.2)
1969,
English



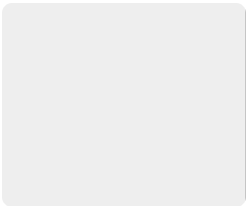
Book (PA5613.P35B38)
1960,
English



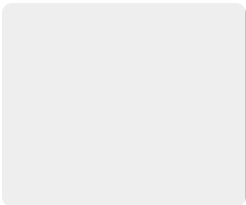
Book (PS3509.EI43Z875)
1960,
English



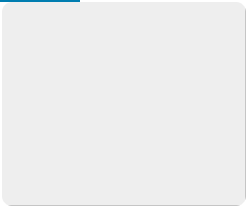
Book (PS3531.R78M514x1968)
1968,
English



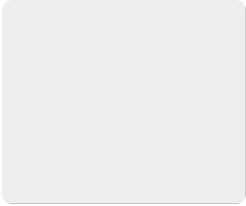
Book (PS3539.O427L361960)
1960,
English



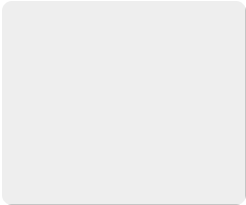
Book (PS3566.E78Pe)
1965,
English



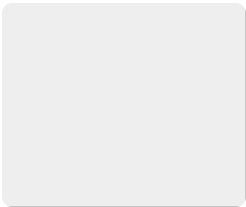
Book (PZ0003.D3555Br)
1960,
English



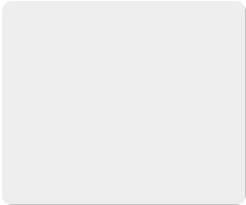
Book (PZ0003.J6432c.1)
1960,
English



Book (PZ0003.J6432c.2)
1960,
English



Book (PZ0004.S1873PA5610.S23)
1969,
English



Book (PZ0008.W682Gr)
1966,
English



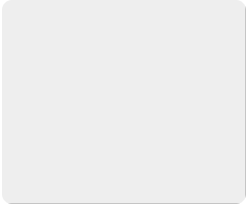
Book (SYMM 186 ZK)
1968,



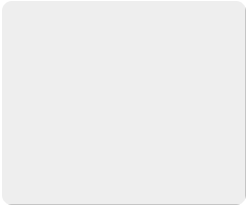
Book (THEOL 8401 C)
1965,



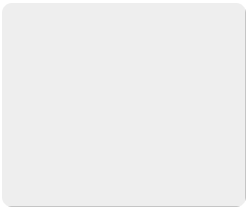
Book (THEOL-8405-VE)
1964,



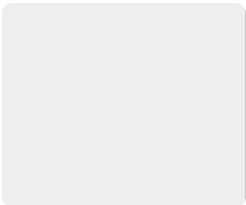
Book (THEOL-8405-VH)
1967,



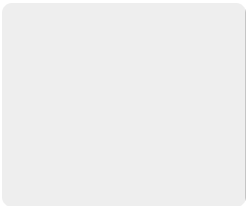
Book (THEOL.*-8405-V)
1963,



Book (TX0715.P4641968)
1968,
English



Book (Z2285 .G7)
1960 – 1963,
English



Periodical (zzzGreekStar)
1907 – 1969,
